

Rhode Island Department of Corrections

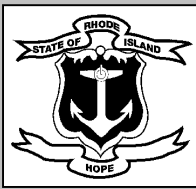
Calendar Year Population Update

December 31, 2013

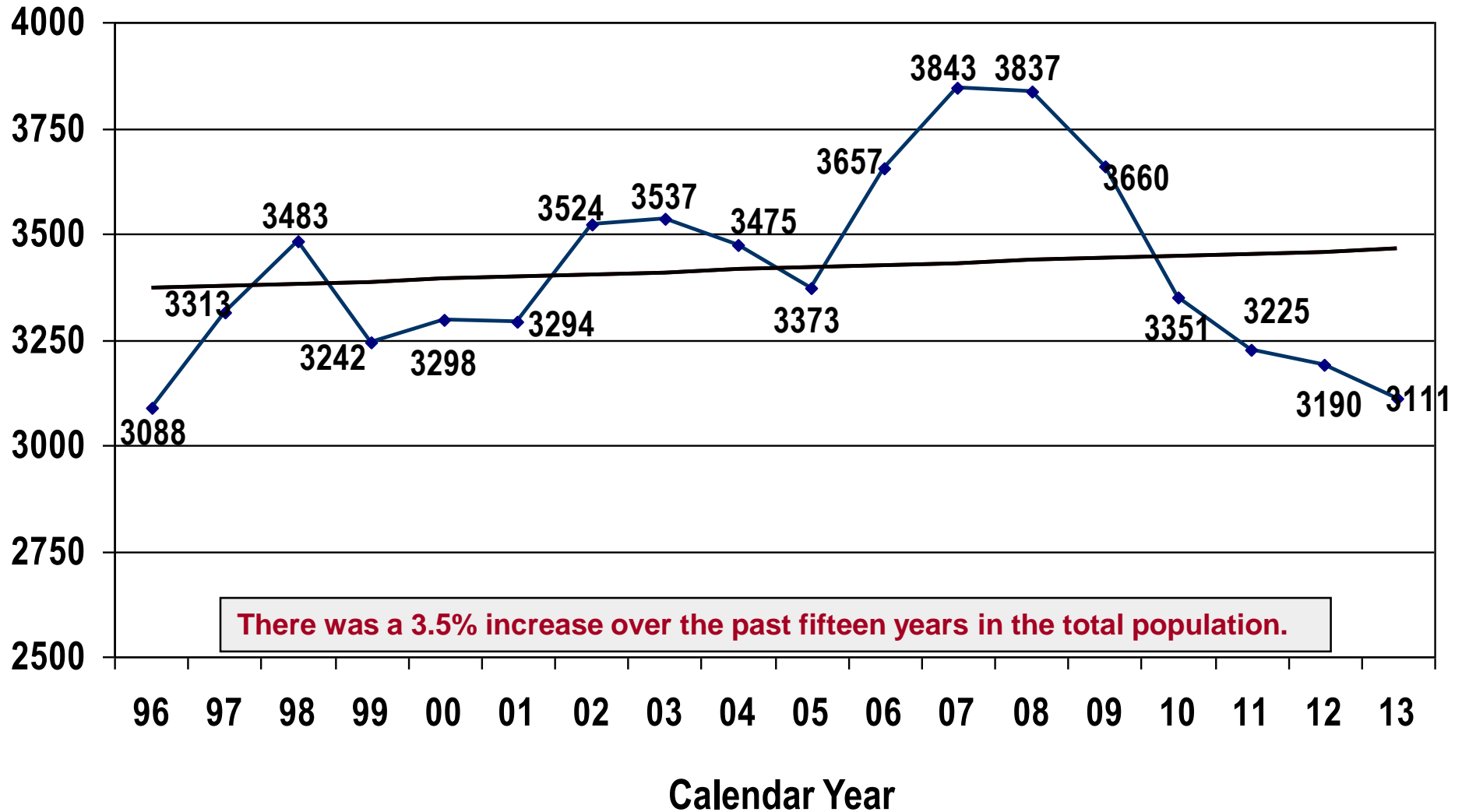
Director Ashbel T. Wall II



Rhode Island Department of
Corrections

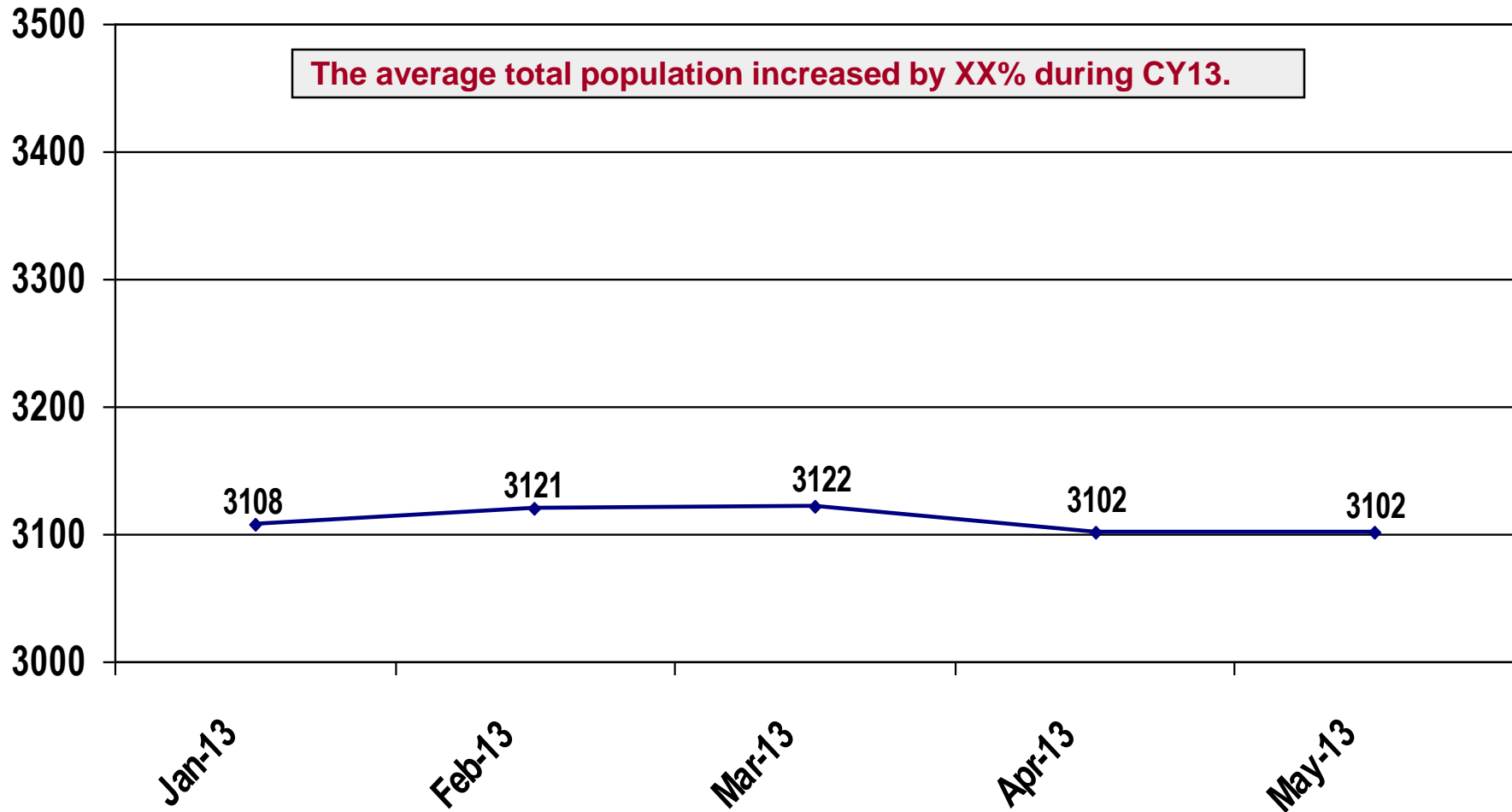


Average Total Population CY 1996 to CY 2013





Average Total Population by Month Calendar Year 2013

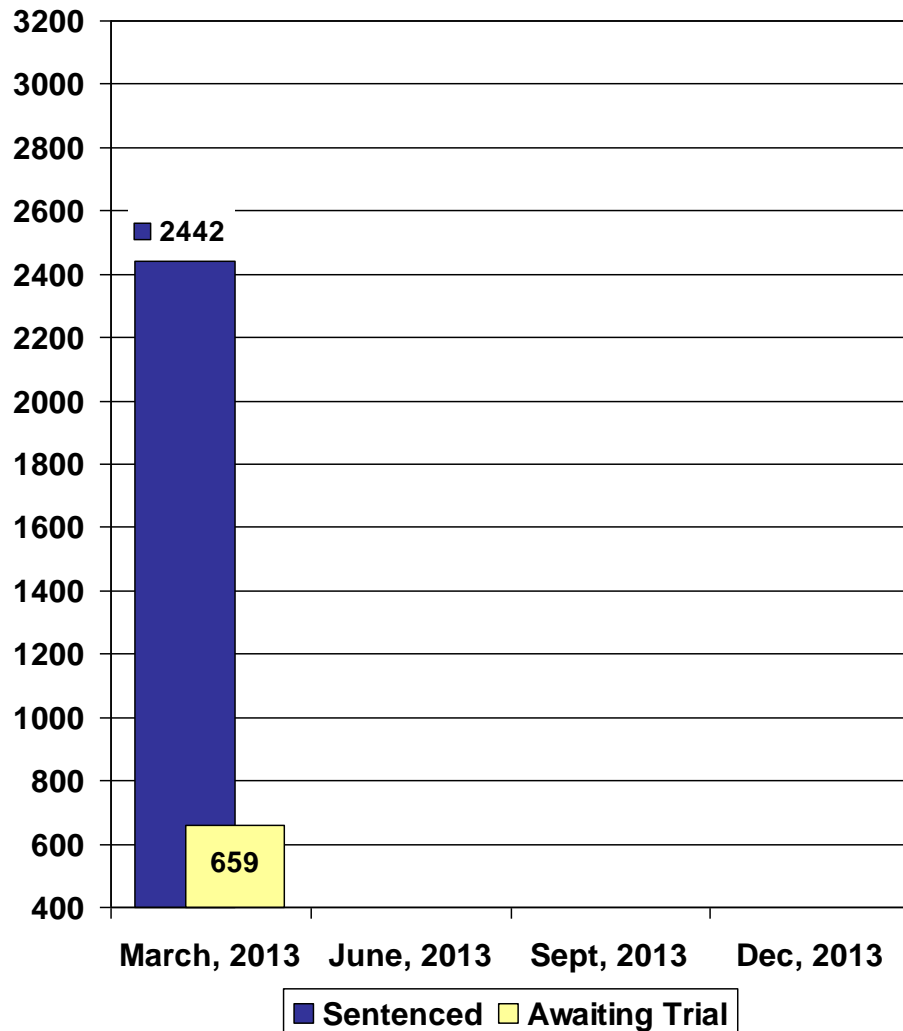




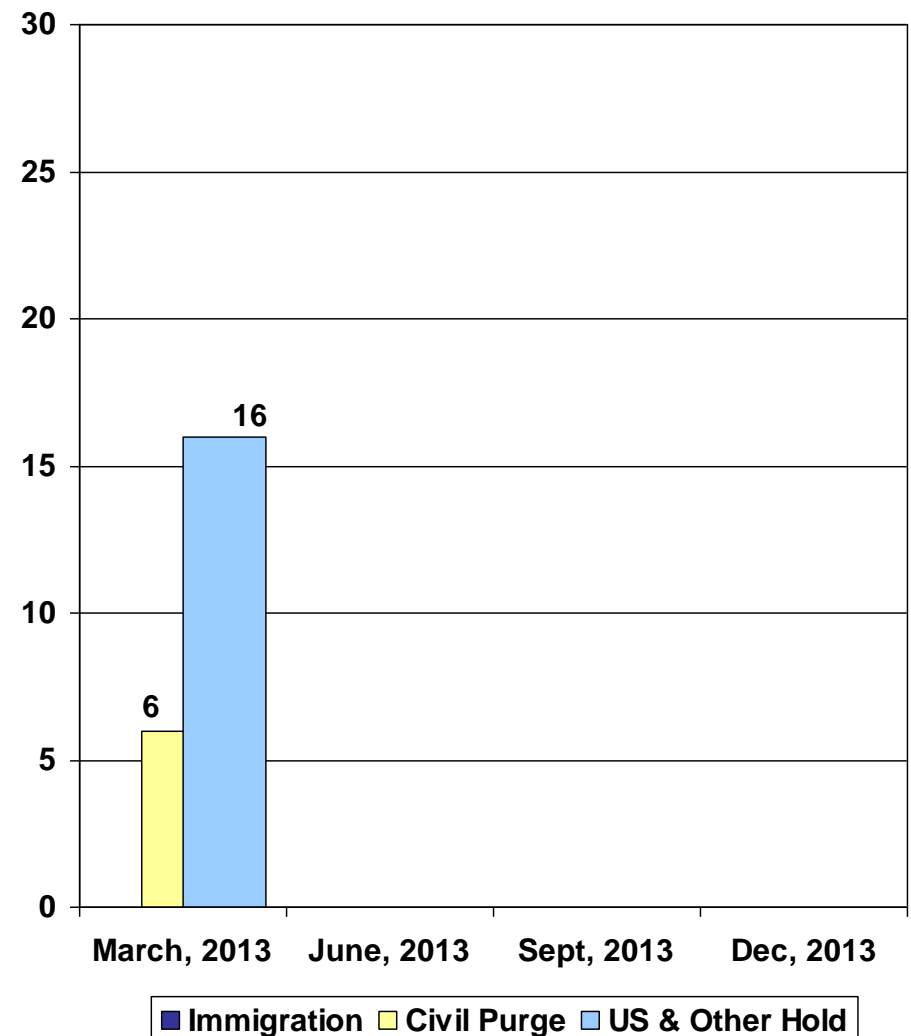
Population Trends During CY 2013

Sentenced & Awaiting Trial, Civil Purge & Detainees

Sentenced & Awaiting Trial



Civil Purge & Detainees

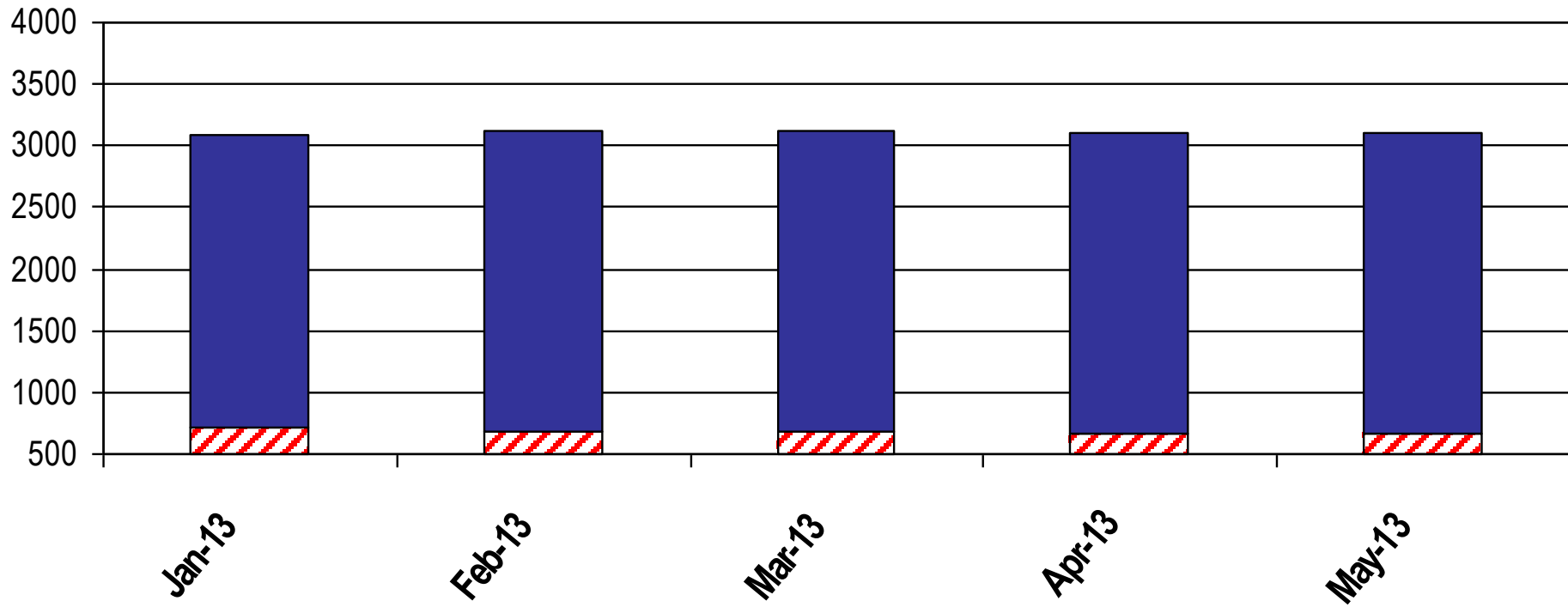




Average Monthly Population CY 2013 by Status – Pretrial or Sentenced

The RI Sentenced population decreased by XX% during CY13.

The RI Pretrial population increased by XX% during CY13.

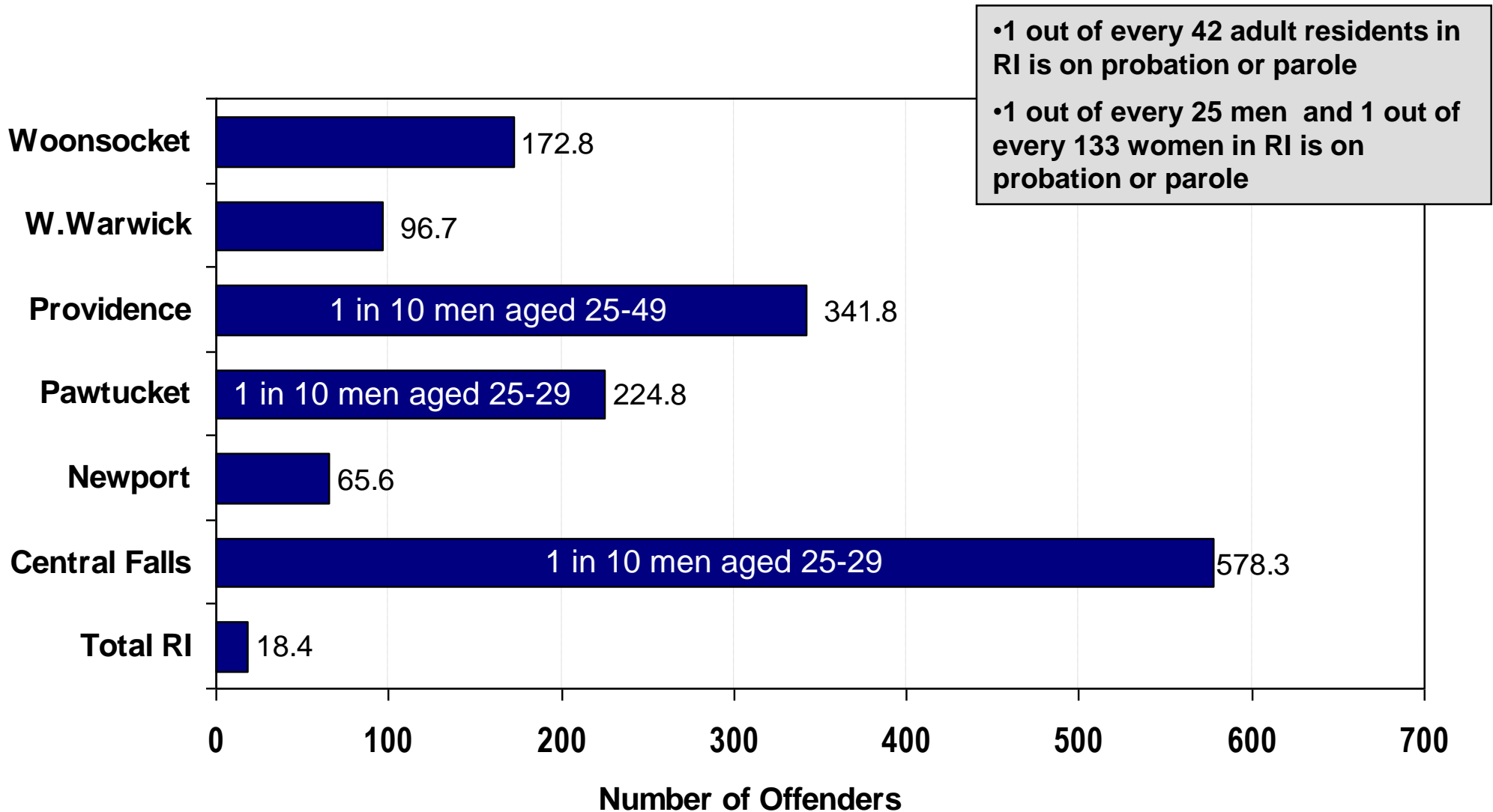


	13-Jan	13-Feb	13-Mar	13-Apr	13-May
■ Sentenced	2381	2437	2448	2443	2443
▨ Pretrial	708	684	675	660	659





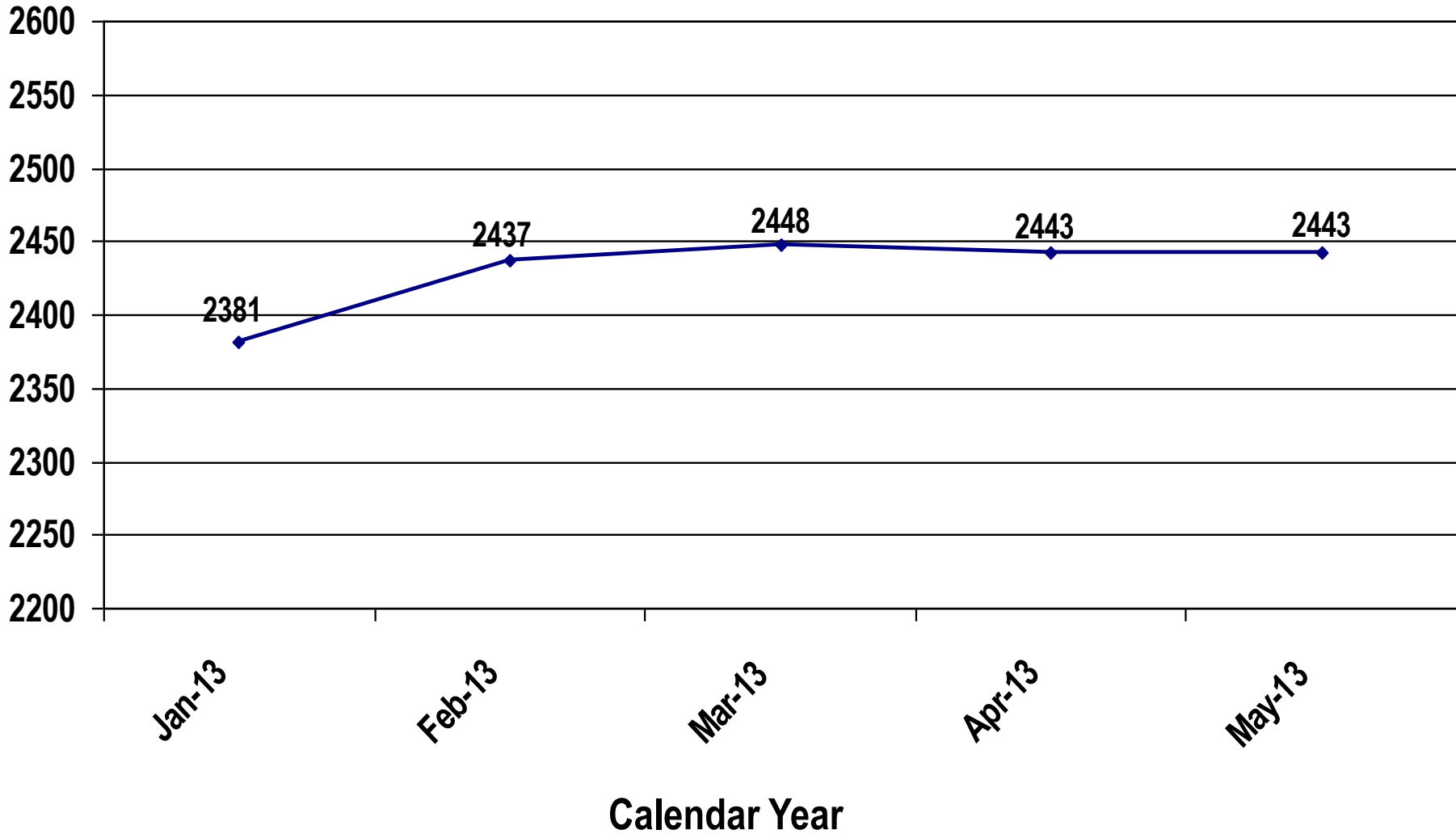
Number of Offenders on Community Supervision per Square Mile as of December 31, 2013 update





Average Monthly Sentenced Population Calendar Year 2013

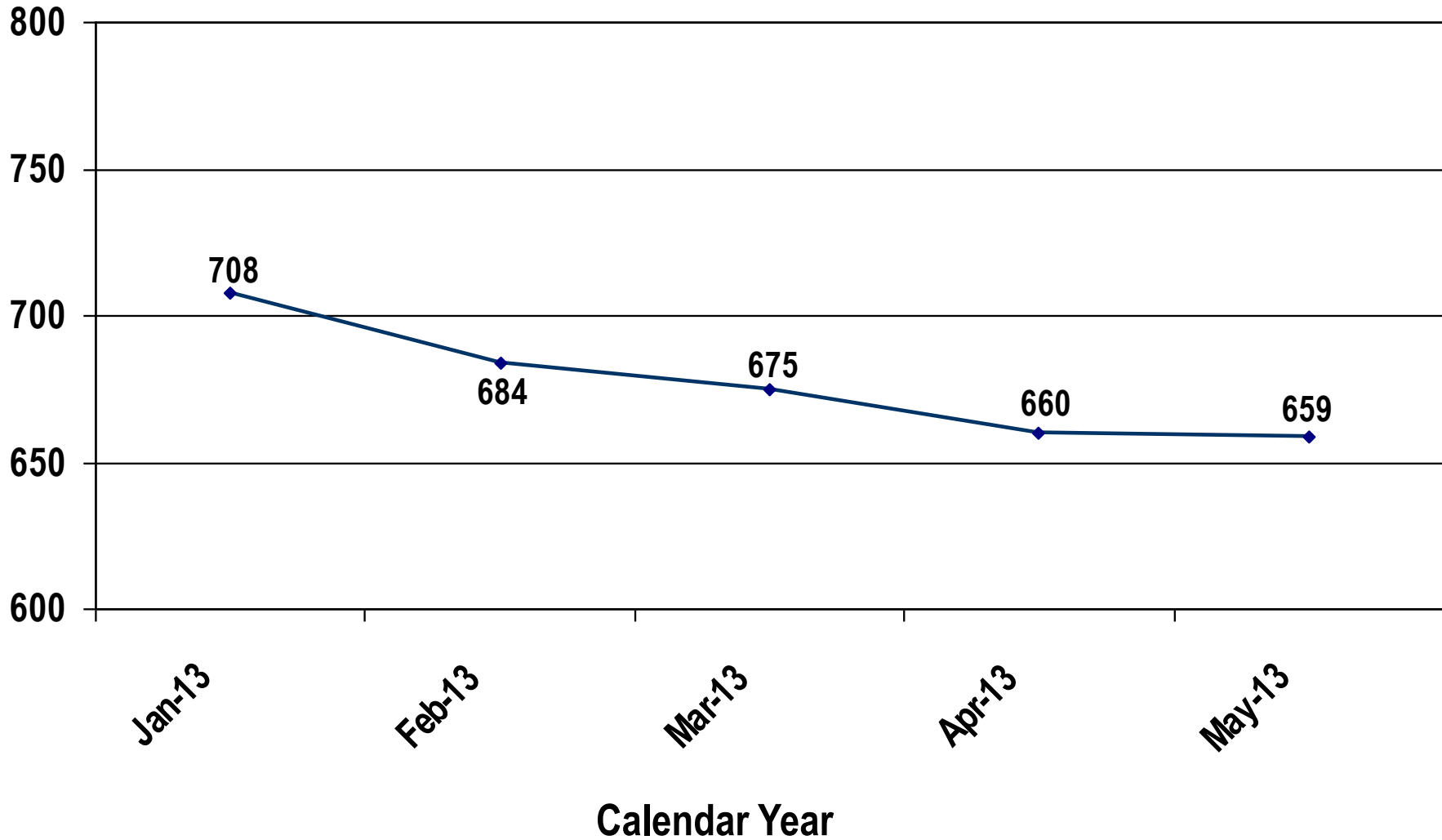
The Sentenced population decreased by XX% during CY13.

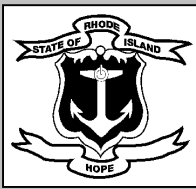




Average Monthly Awaiting Trial Population Calendar Year 2013

The Pretrial population increased by XX% during CY13.

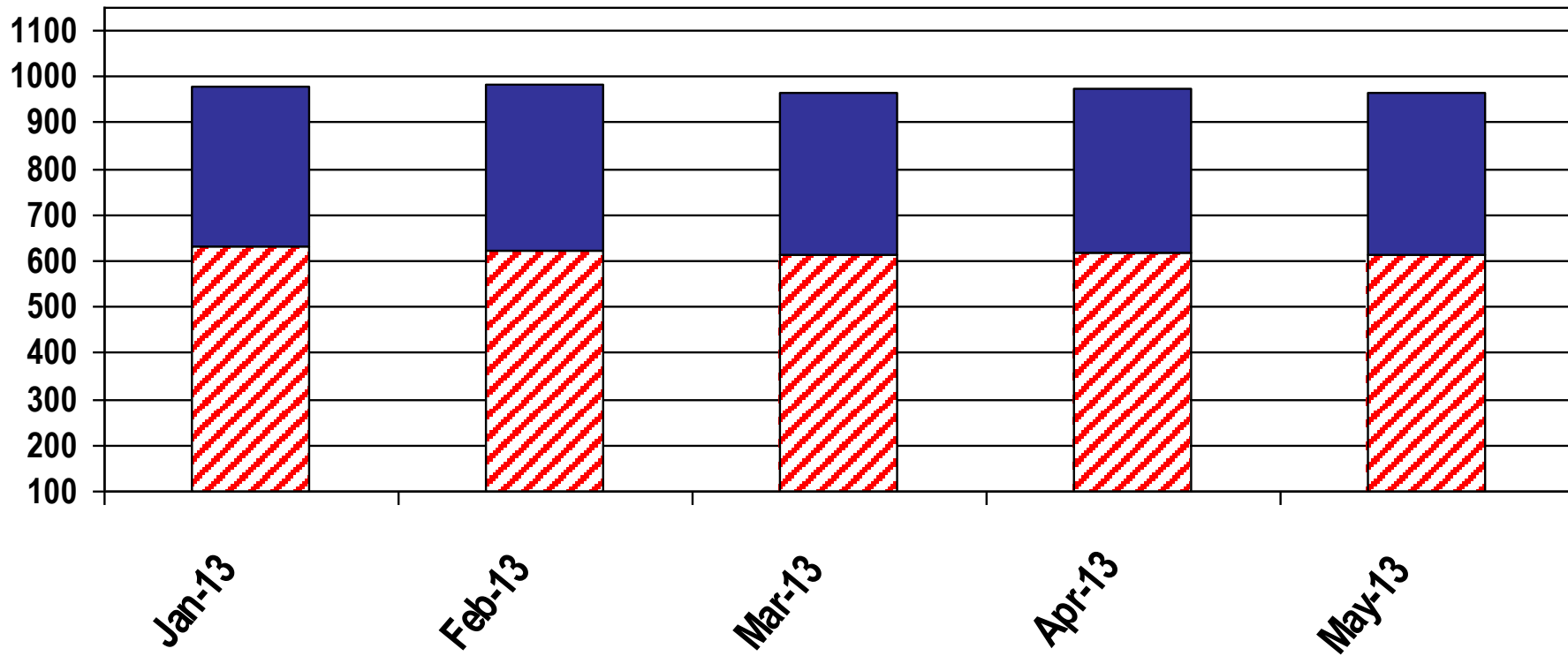




Intake Service Center (ISC) Average Monthly Population CY 2013 by Status – Pretrial or Sentenced

The RI Sentenced population at the ISC increased by XX% during CY13.

The RI Pretrial population at the ISC increased by XX% during CY13.



	13-Jan	13-Feb	13-Mar	13-Apr	13-May
■ Sentenced	347	360	352	354	352
▨ Pretrial	634	623	612	620	615

*Please note September is an average of 9/1-9/23 and not an average of the entire month





RIDOC Total Commitments CY 1996 – 2013

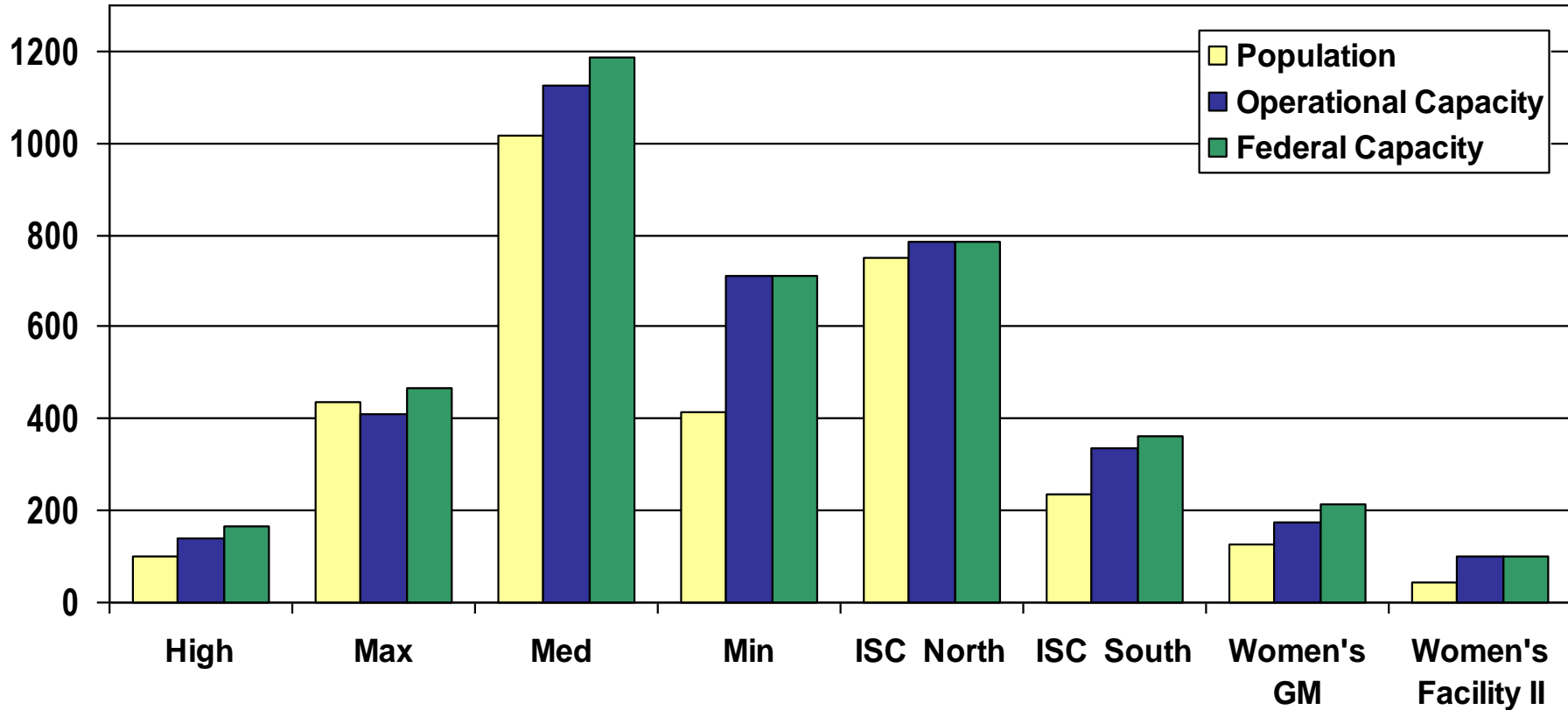
Calendar Year	# Commitments	+/- Change
1996	14,820	
1997	15,672	5.7%
1998	16,526	5.4%
1999	15,828	-4.2%
2000	16,389	3.5%
2001	16,892	3.1%
2002	17,487	3.5%
2003	18,026	3.1%
2004	17,497	-2.9%
2005	17,682	1.1%
2006	19,287	9.1%
2007	17,764	-7.9%
2008	16,865	-5.1%
2009	15,306	-9.2%
2010	15,173	-0.87%
2011	15,084	-0.6%
2012	15,318	1.6%
2013		





Population vs. Operational & Federal Capacity

March 2013



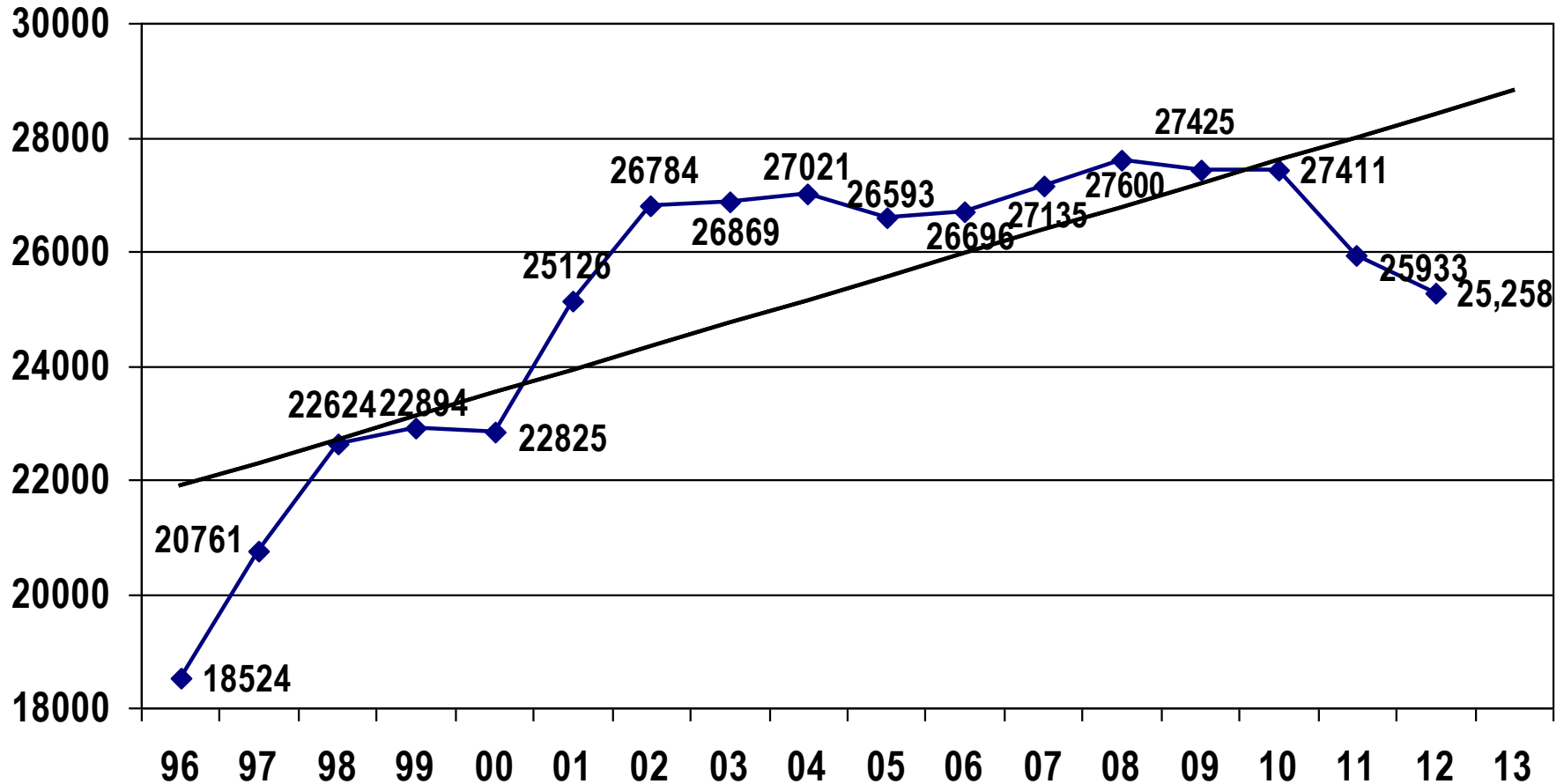
Pop. % of Op Cap	60.8%	106.8%	100.3%	93.5%	67.7%	98.1%	55.7%	79.3%	45.6%
Pop. % of Fed Cap	50.7%	93.8%	94.7%	84.1%	67.7%	98.1%	51.2%	77.5%	35.1%

Total Average Population for December 2013 =
XX% of Operational Capacity (3774) and XX% of Federal Capacity (3989)





Average Total Probation & Parole Population CY 1996 to CY 2013



Over the past 15 years the population has increased XX.X%

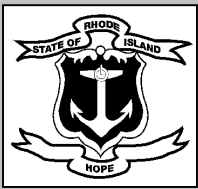
*Total population includes active, low and banked supervision cases.

As of December 31, 2009, there were 20,443 RI offenders under the supervision of Adult Probation & Parole living on the streets of RI.

The remaining 6,806 offenders are:

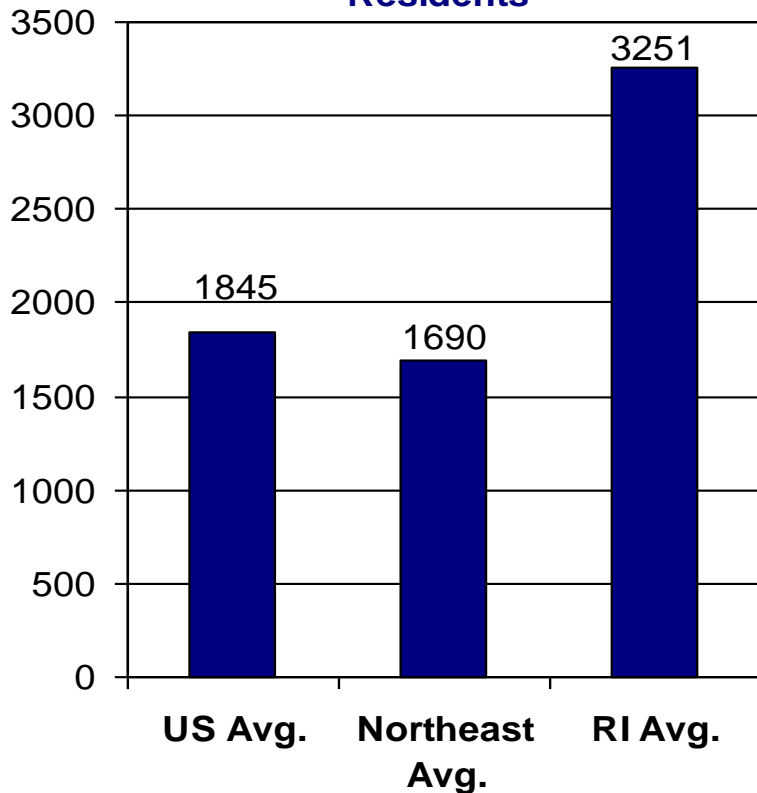
- currently incarcerated (2228)
- being supervised by another State (1086)
- residing in another State (1948)
- have been deported (444)
- 538 out of state offenders being supervised in RI
- paroled to immigration or other jurisdiction (84)
- another 177 offenders for whom a residential location was unable to be determined.
- 301 with other addresses (ACI, No Permanent Address, etc.)
- 0 offenders under 18 years under active supervision





How does the RI Probation Population compare?

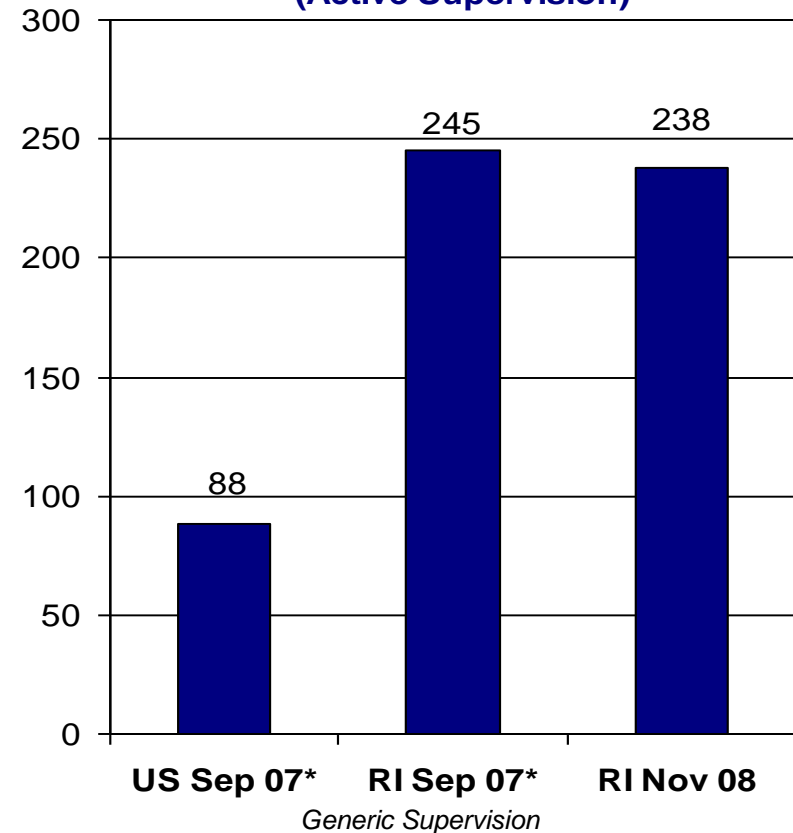
Probationers per 100,000 Adult Residents



RI ranks 4th in the nation and 2nd in the Northeast in the number of probationers per 100,000 adult residents. Massachusetts ranks 1st in the Northeast with 3620 probationers per 100,000 adult residents.

Data provided by Bureau of Justice Statistics Bulletin: "Probation and Parole in the United States, 2008"

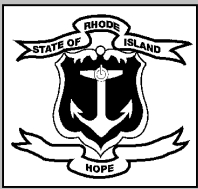
Average Probation Caseload Size (Active Supervision)



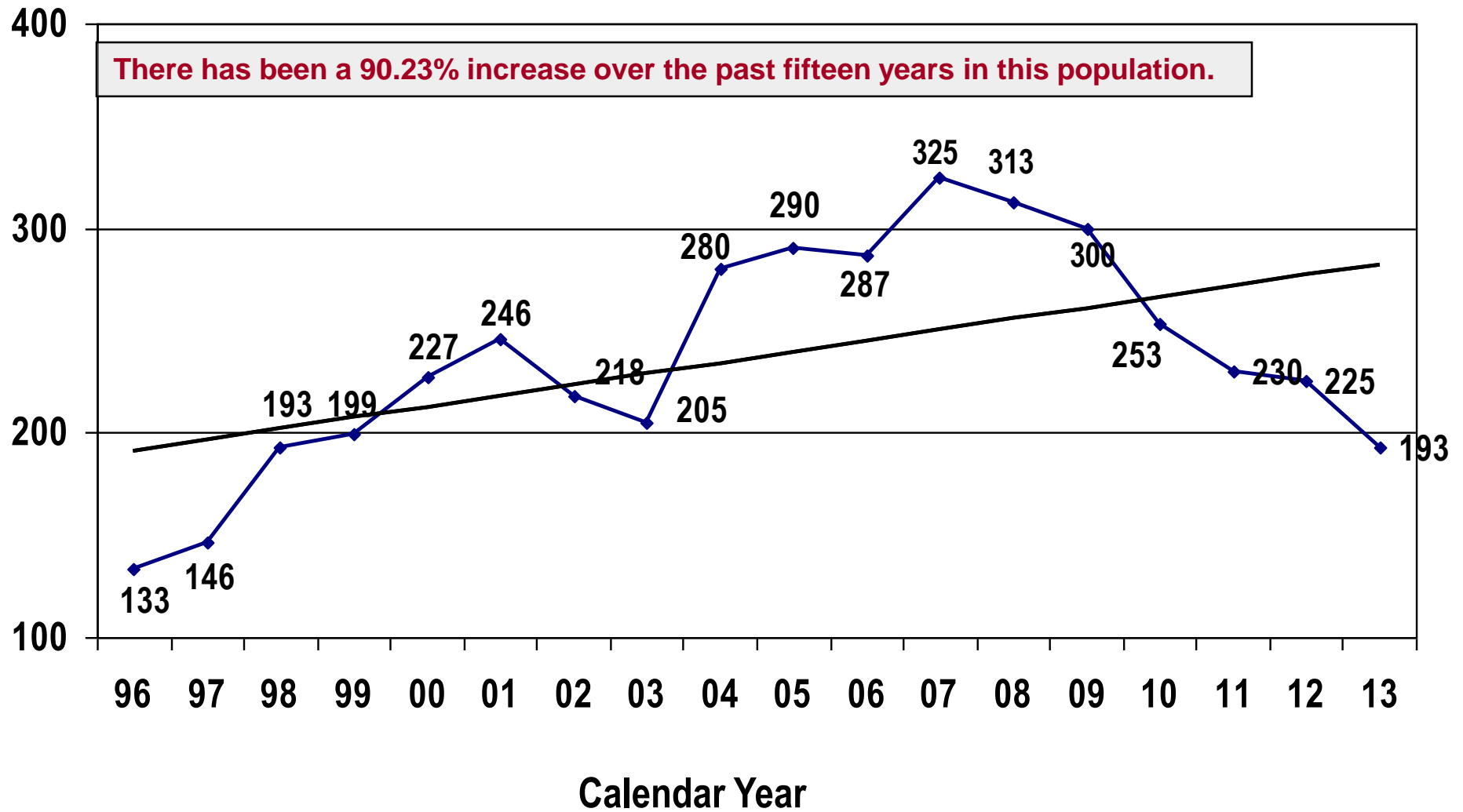
In 2007 (most recent year for which there is national data available), the RI average was almost three times the national average.

** Data provided by the American Correctional Association Directory, 2008 (calendar year 2007 data), based on 13 of 50 jurisdictions reporting.*





Average Total Community Confinement Population CY96 to CY13





RI Inmates Serving Life or Life without Parole

On December 31, 2013 there were **162** Rhode Island inmates serving a Life Sentence (**17** were serving out-of-state).

On December 31, 2013 there were **40** Rhode Island inmates serving a sentence of Life without Parole (**5** were serving out-of state).

Since 1990, there have been 5 inmates who died while serving a Life sentence and 2 who died while serving Life without Parole.

