

Rhode Island Department of Corrections

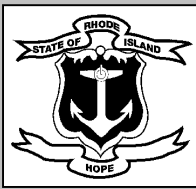
Calendar Year Population Update

December 31, 2011

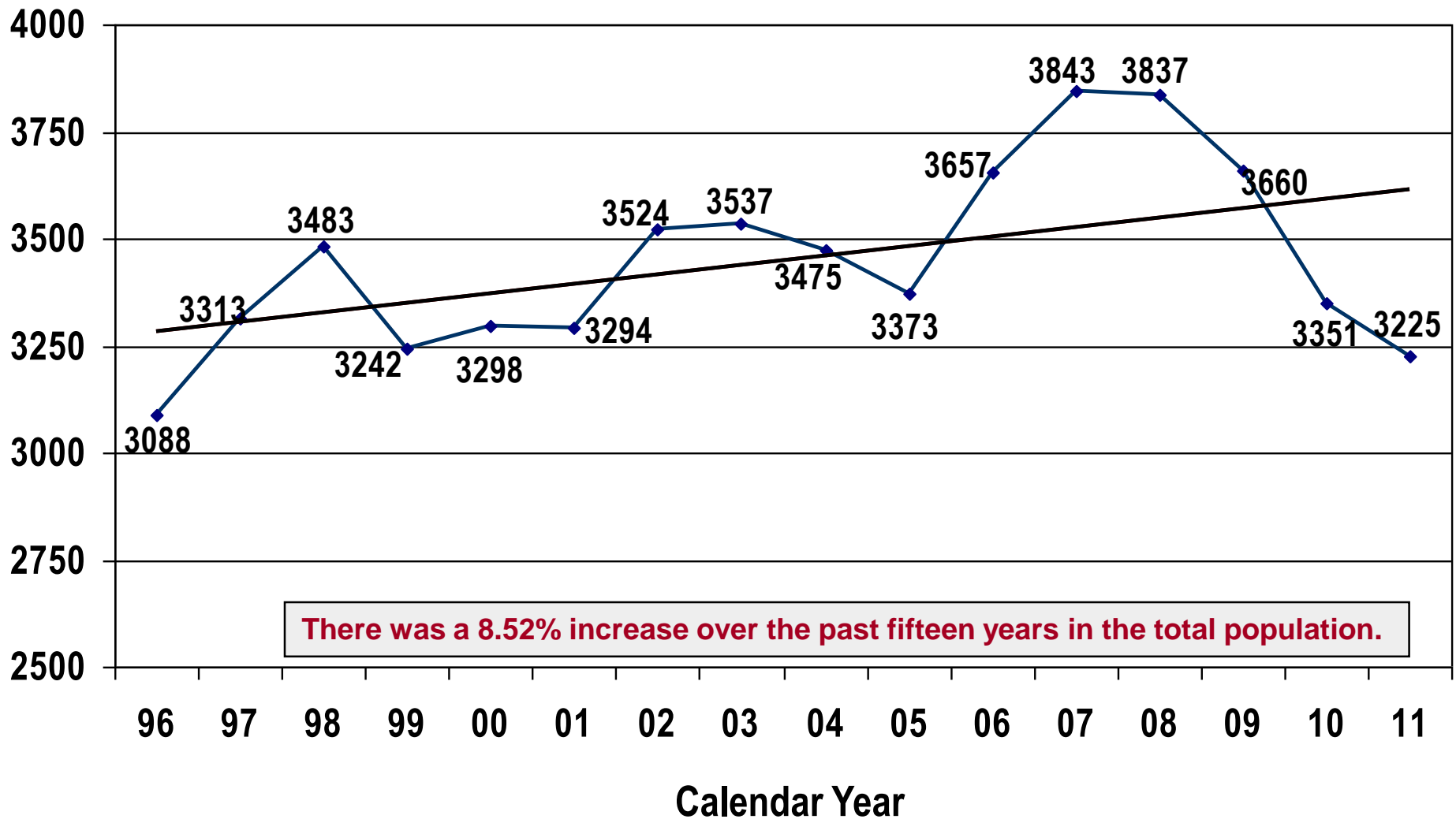
Director Ashbel T. Wall II



Rhode Island Department of
Corrections

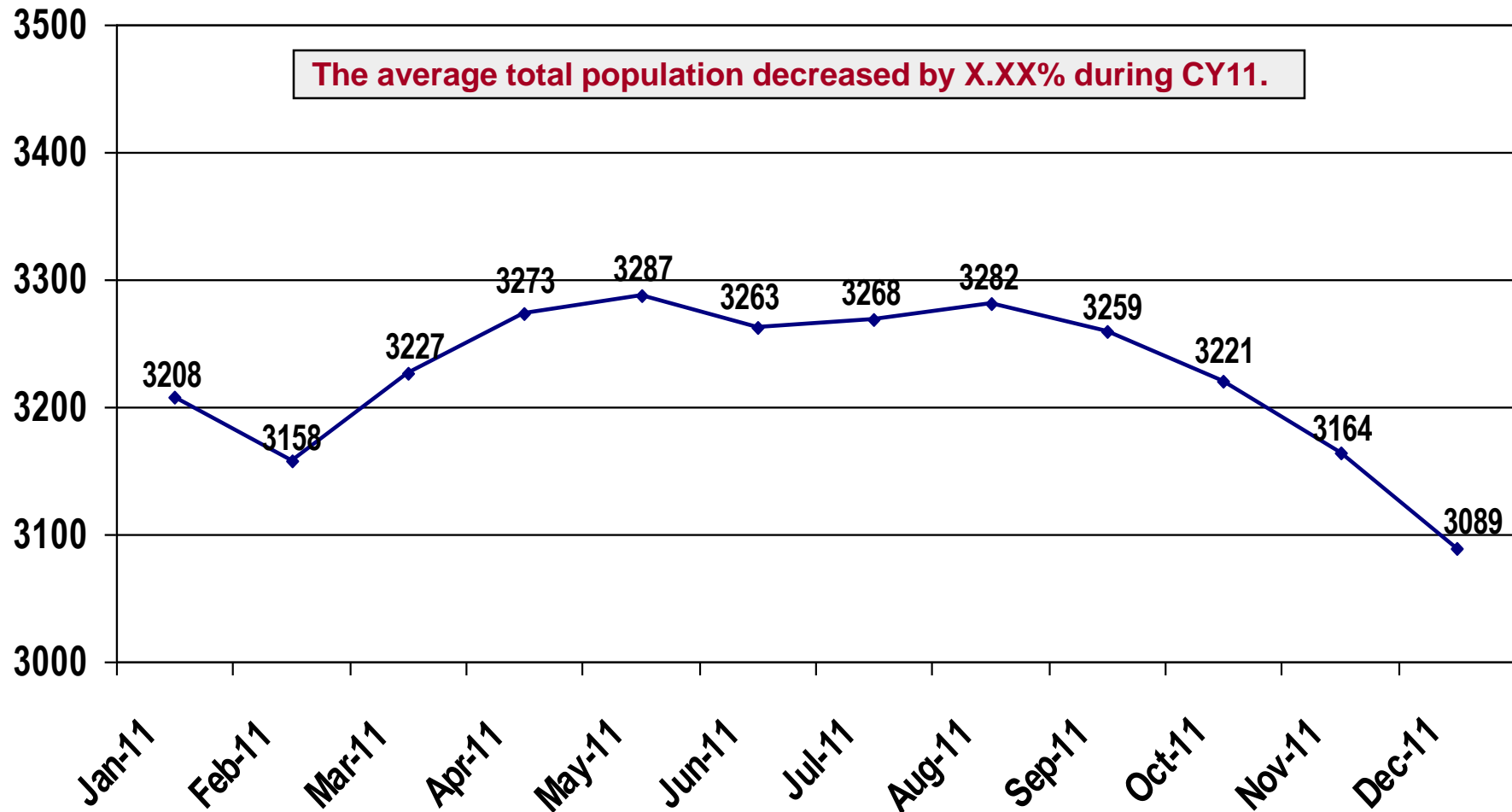


Average Total Population CY 1996 to CY 2011





Average Total Population by Month Calendar Year 2011

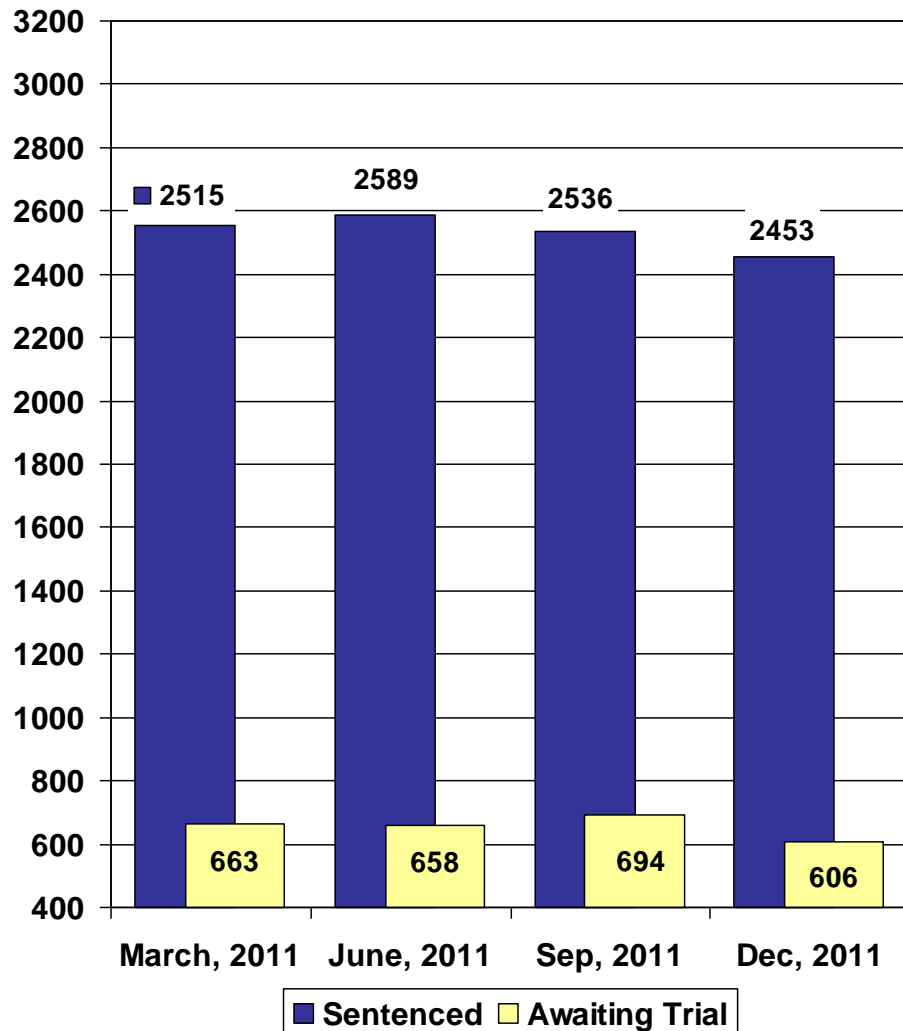




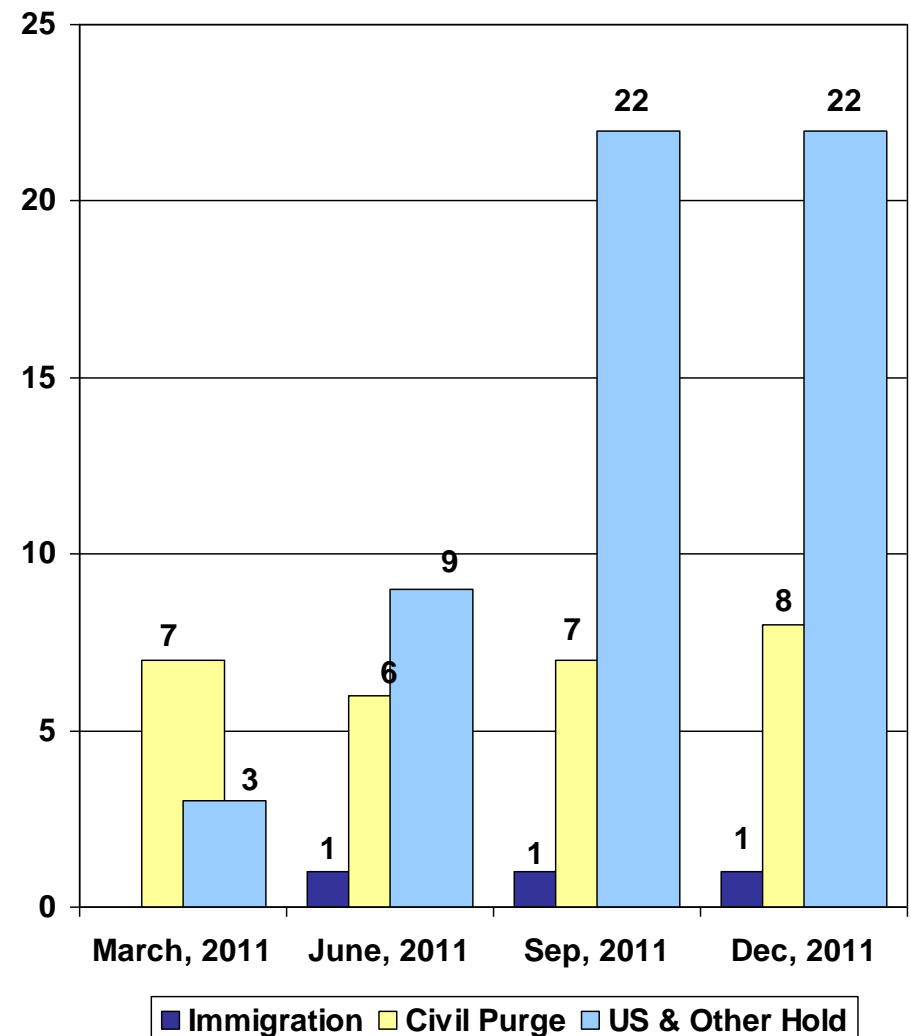
Population Trends During CY 2011

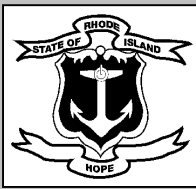
Sentenced & Awaiting Trial, Civil Purge & Detainees

Sentenced & Awaiting Trial



Civil Purge & Detainees

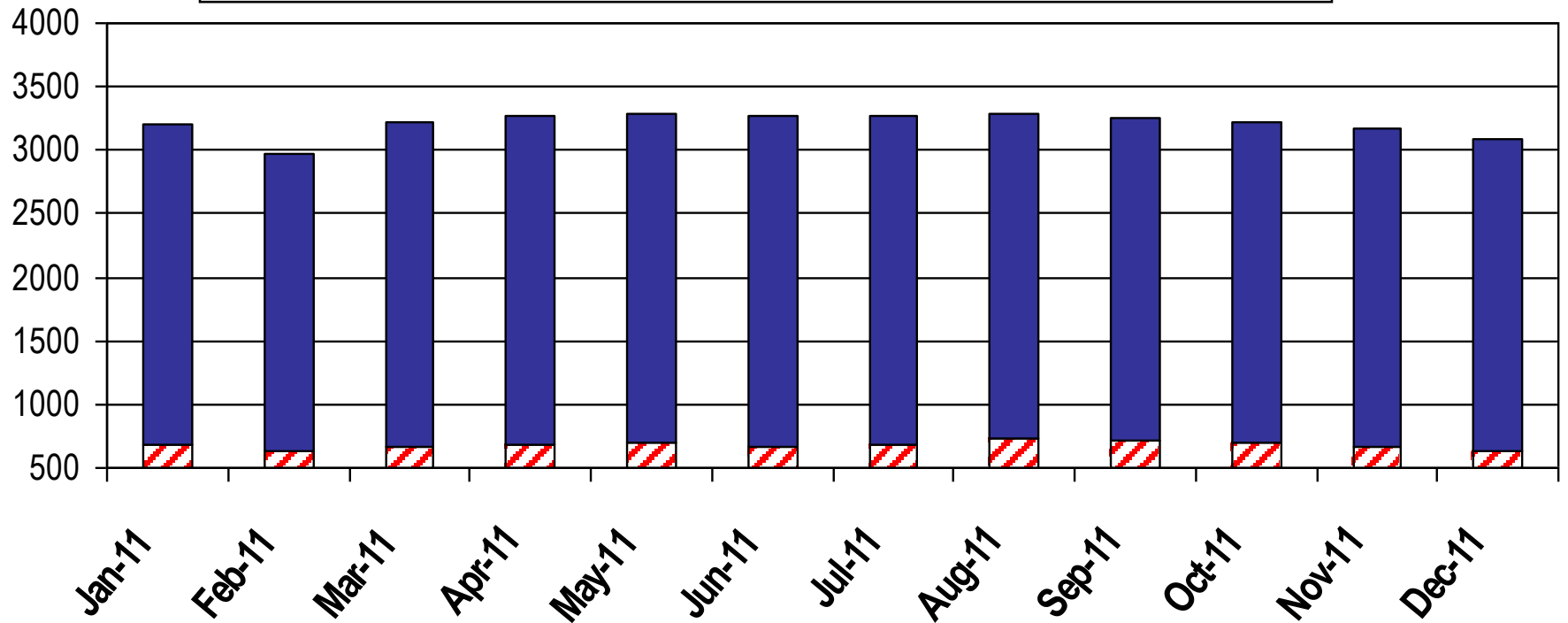




Average Monthly Population CY 2011 by Status – Pretrial or Sentenced

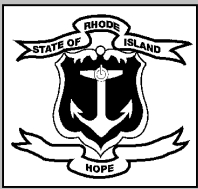
The RI Sentenced population decreased by X.XX% during CY11.

The RI Pretrial population decreased by X.XX% during CY11.

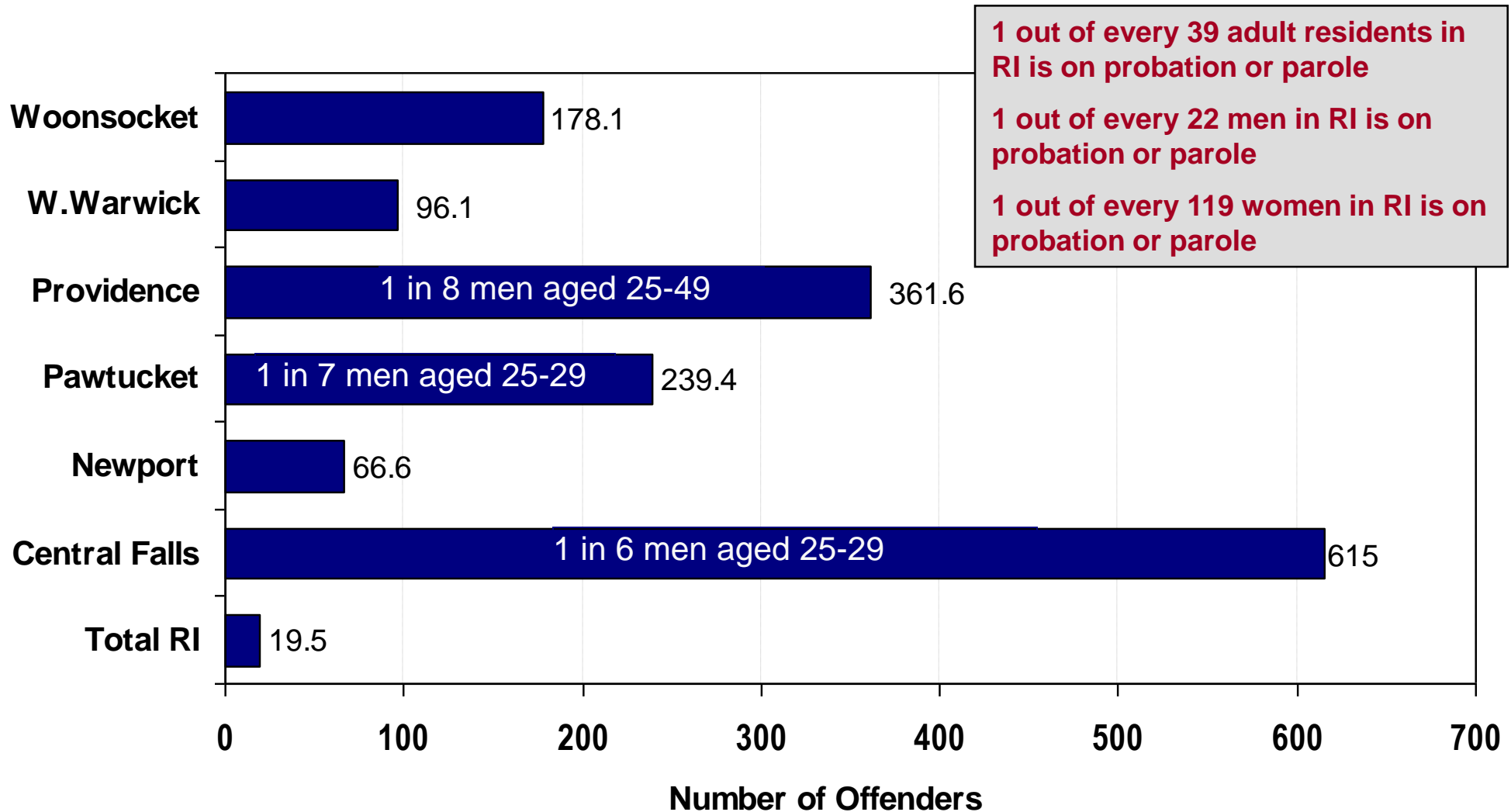


	11-Jan	11-Feb	11-Mar	11-Apr	11-May	11-Jun	11-Jul	11-Aug	11-Sep	11-Oct	11-Nov	11-Dec
■ Sentenced	2520	2351	2561	2598	2596	2595	2588	2559	2543	2526	2504	2461
▨ Pretrial	687	628	666	675	691	668	681	724	717	697	660	628





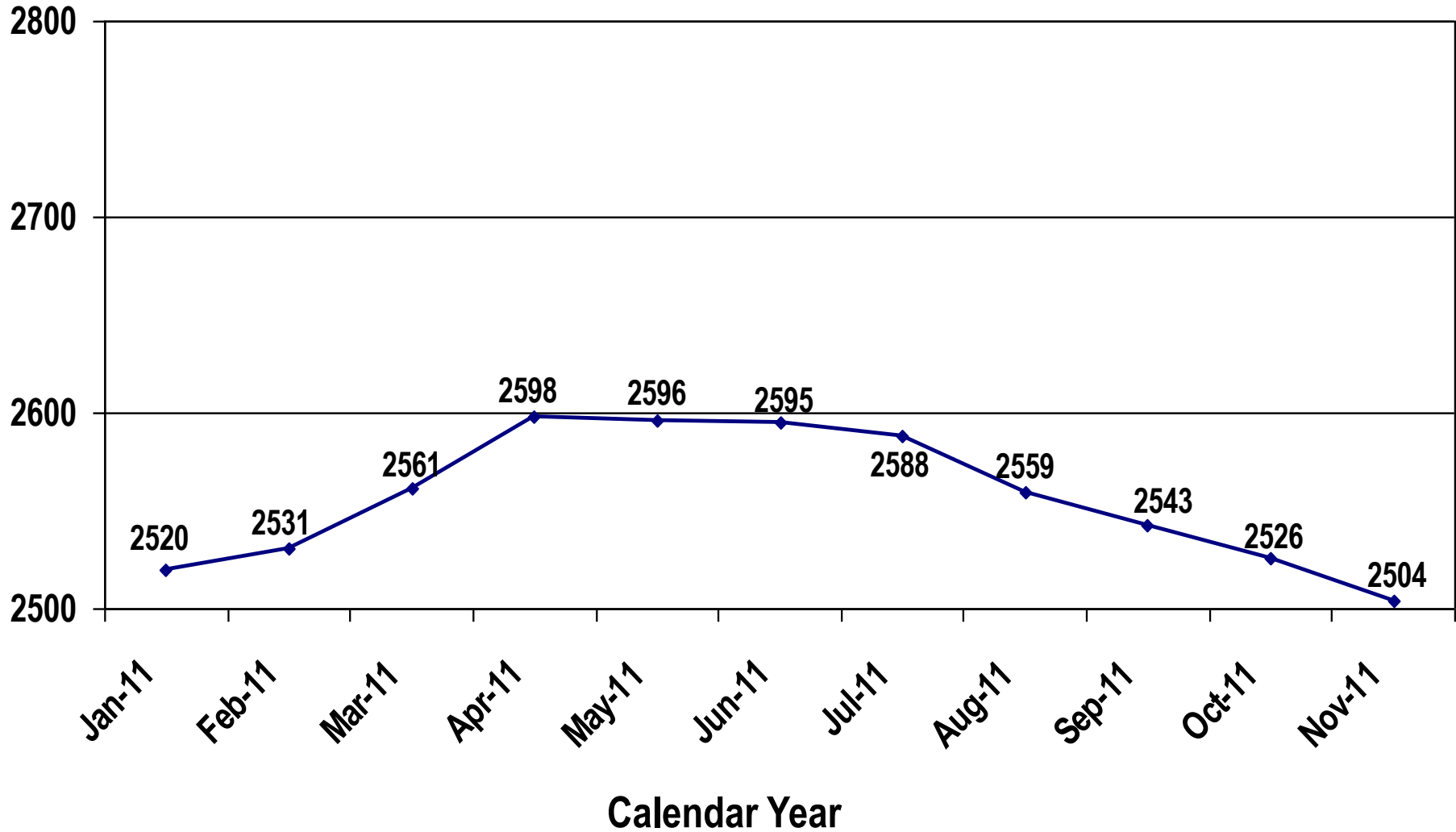
Number of Offenders on Community Supervision per Square Mile as of December 31, 2010





Average Monthly Sentenced Population Calendar Year 2011

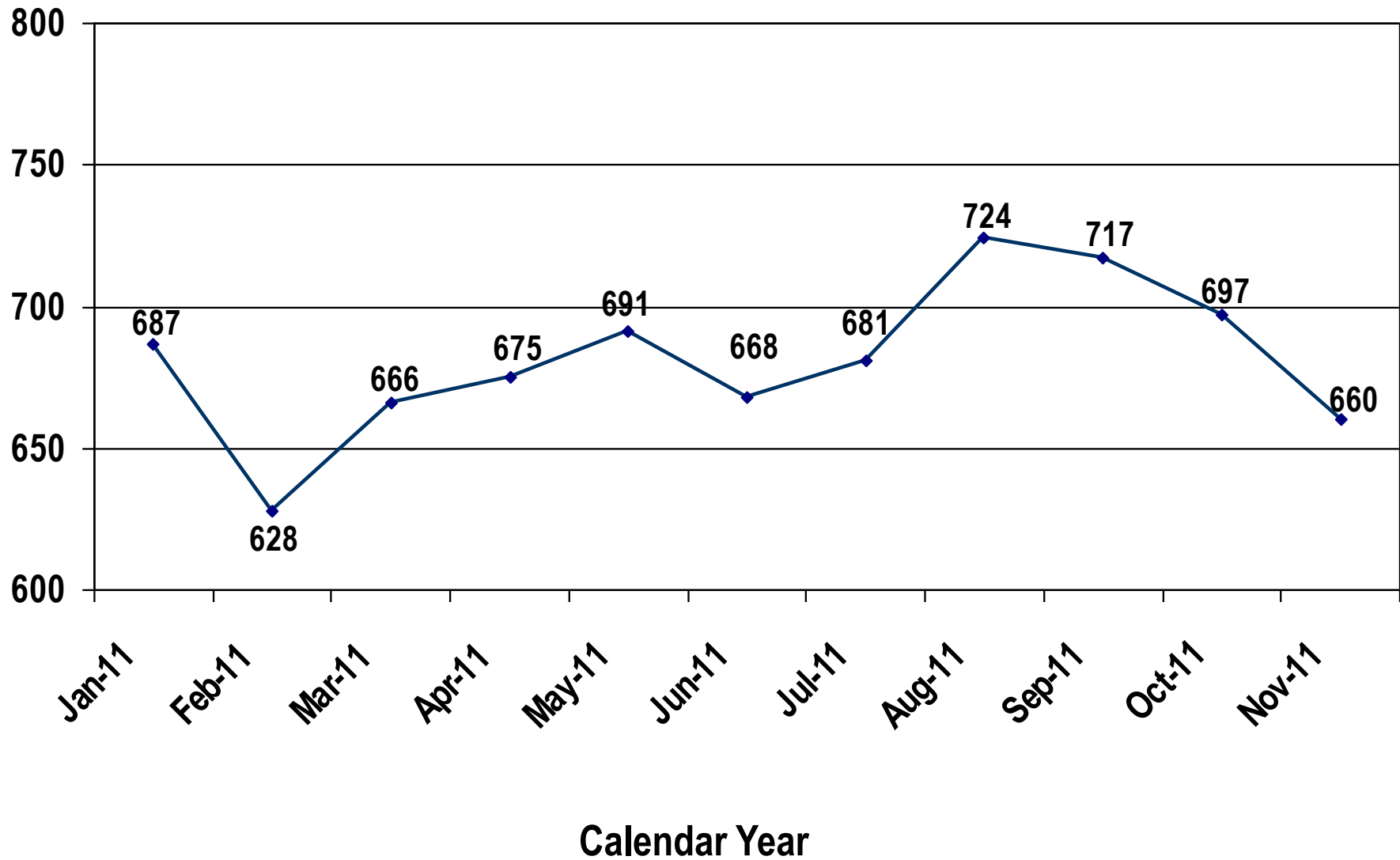
The Sentenced population decreased by X.XX% during CY11.





Average Monthly Awaiting Trial Population Calendar Year 2011

The Pretrial population decreased by X.XX% during CY11.

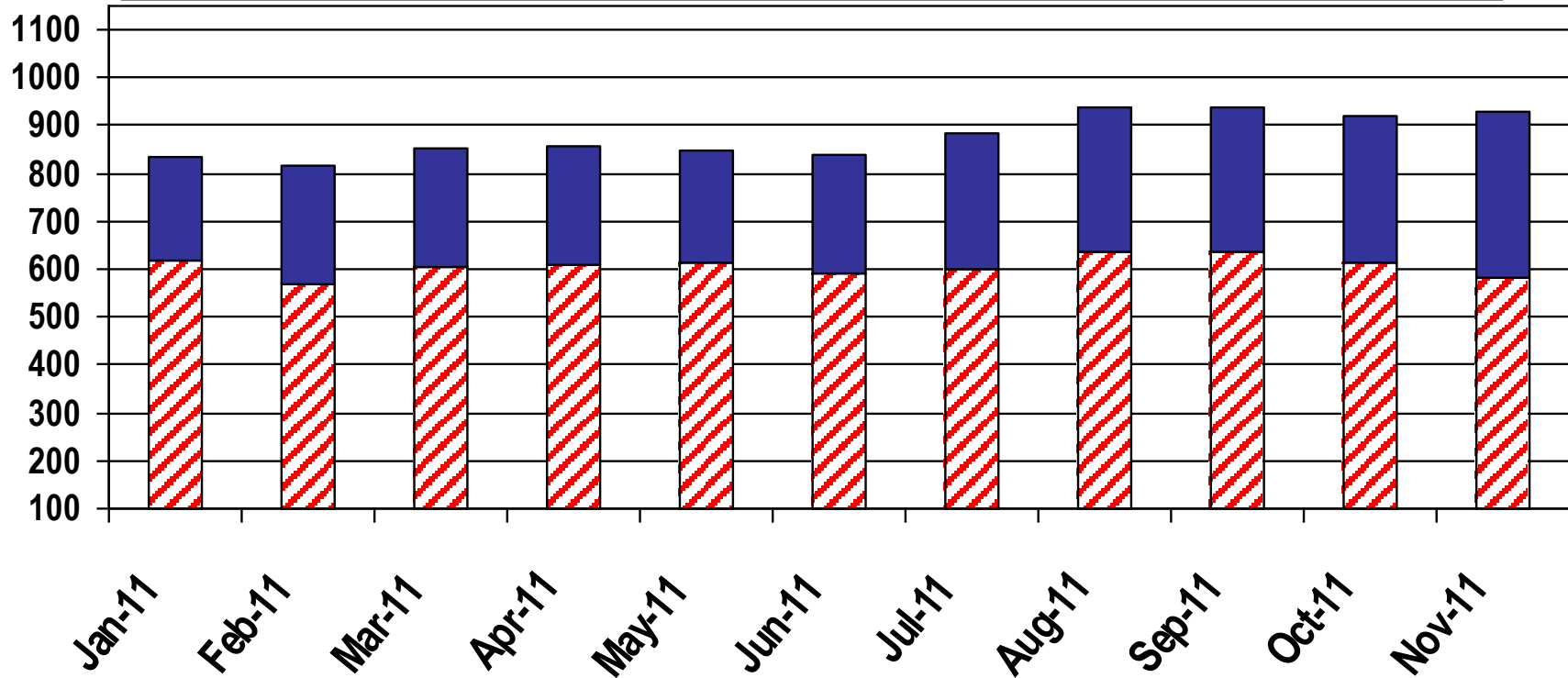




Intake Service Center (ISC) Average Monthly Population CY 2011 by Status – Pretrial or Sentenced

The RI Sentenced population at the ISC decreased by XX.XX% during CY11.

The RI Pretrial population at the ISC decreased by X.XX% during CY11.



	11-Jan	11-Feb	11-Mar	11-Apr	11-May	11-Jun	11-Jul	11-Aug	11-Sep	11-Oct	11-Nov
■ Sentenced	217	248	248	245	235	247	287	304	298	308	347
▨ Pretrial	616	567	606	610	614	593	599	636	638	614	581





RIDOC Total Commitments CY 1995 – 2011

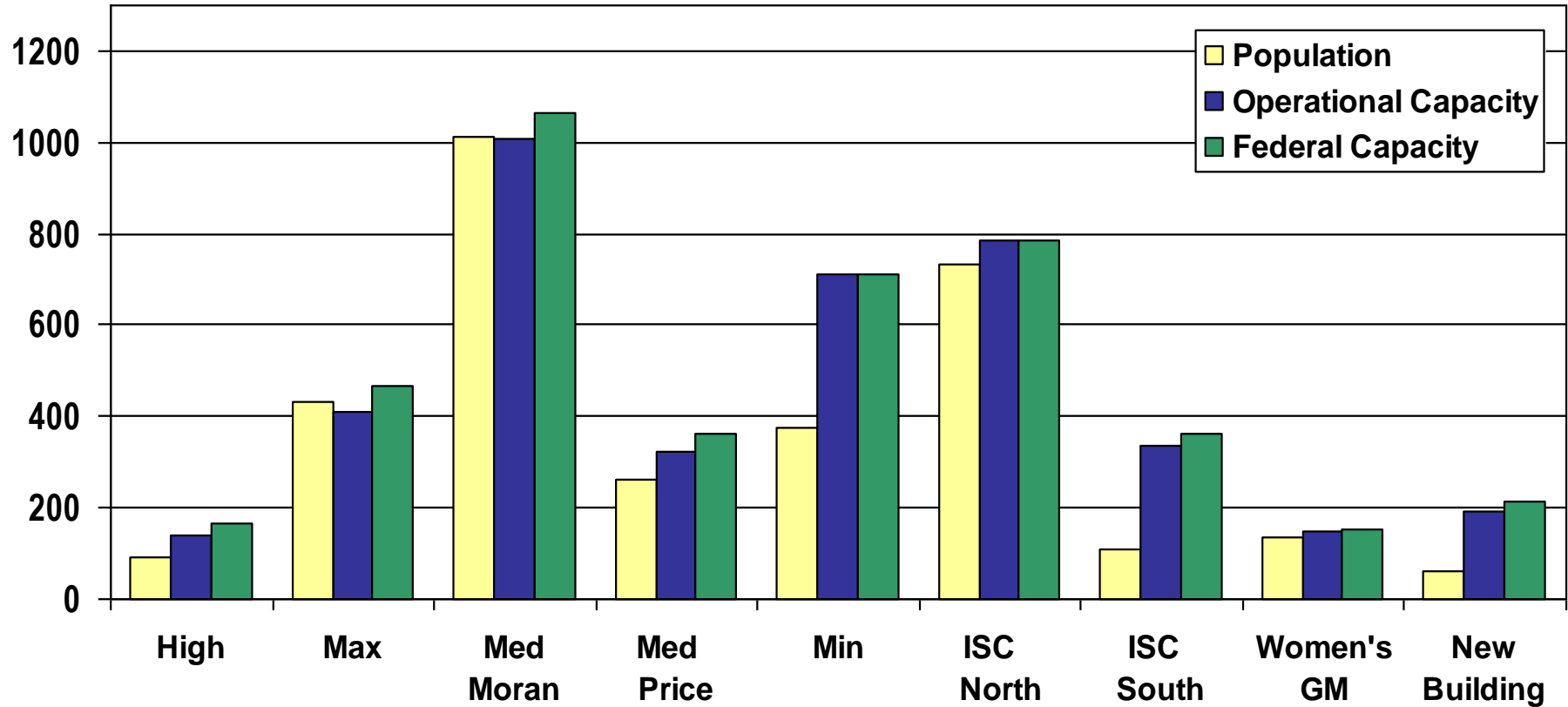
Calendar Year	# Commitments	+/- Change
1995	14,417	
1996	14,820	2.8%
1997	15,672	5.7%
1998	16,526	5.4%
1999	15,828	-4.2%
2000	16,389	3.5%
2001	16,892	3.1%
2002	17,487	3.5%
2003	18,026	3.1%
2004	17,497	-2.9%
2005	17,682	1.1%
2006	19,287	9.1%
2007	17,764	-7.9%
2008	16,865	-5.1%
2009	15,306	-9.2%
2010	15,173	-0.87%
2011		





Population vs. Operational & Federal Capacity

December 2011



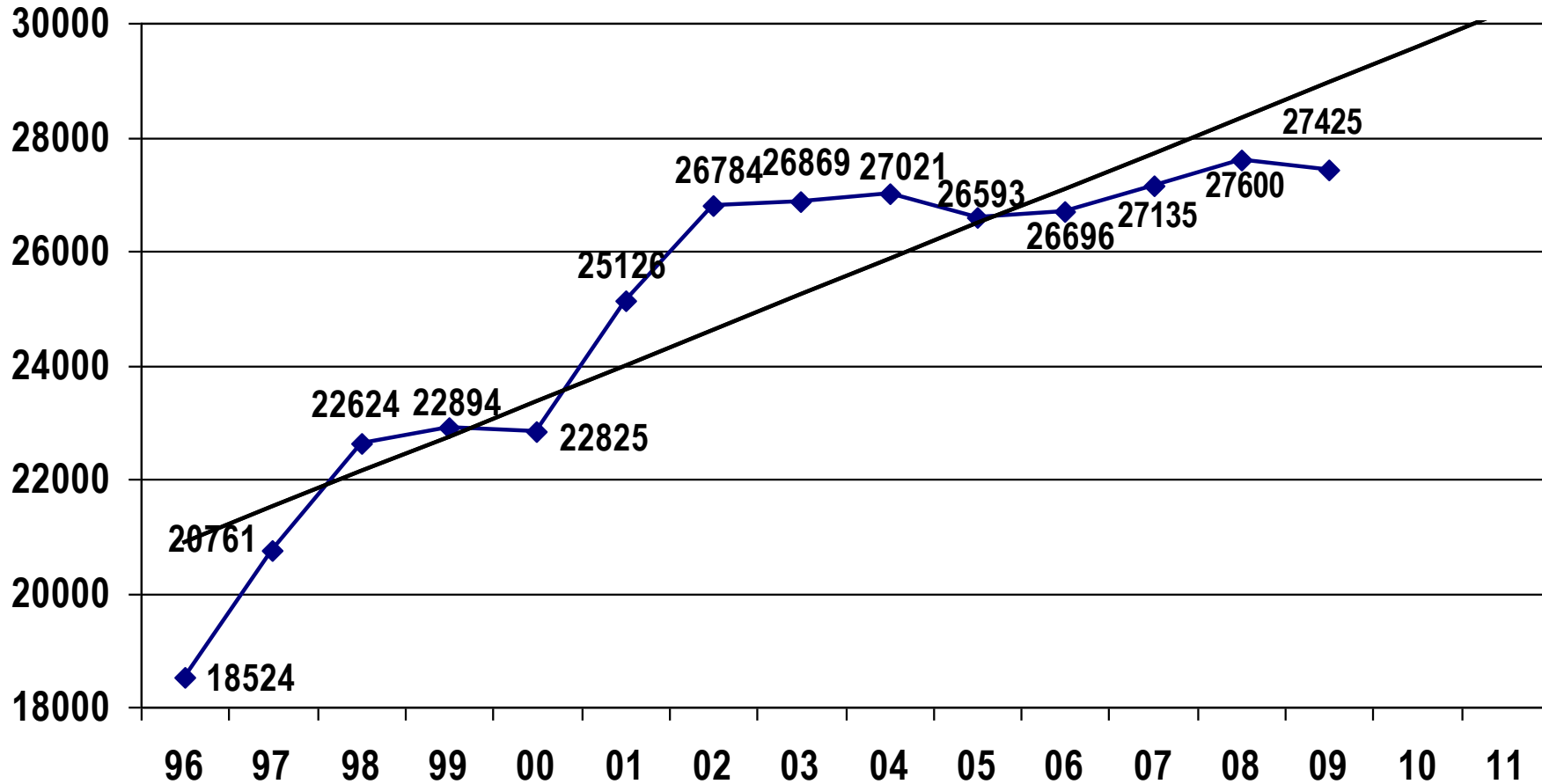
Pop. % of Op Cap	60.8%	106.8%	100.3%	93.5%	67.7%	98.1%	55.7%	79.3%	45.6%
Pop. % of Fed Cap	50.7%	93.8%	94.7%	84.1%	67.7%	98.1%	51.2%	77.5%	35.1%

Total Average Population for December 2011 = XXXX
XX.X% of Operational Capacity (4028) and XX.X% of Federal Capacity (4283)





Average Total Probation & Parole Population CY 1996 to CY 2011



Over the past 15 years the population has increased XX.X%

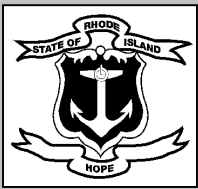
*Total population includes active, low and banked supervision cases.

As of December 31, 2009, there were 20,443 RI offenders under the supervision of Adult Probation & Parole living on the streets of RI.

The remaining 6,806 offenders are:

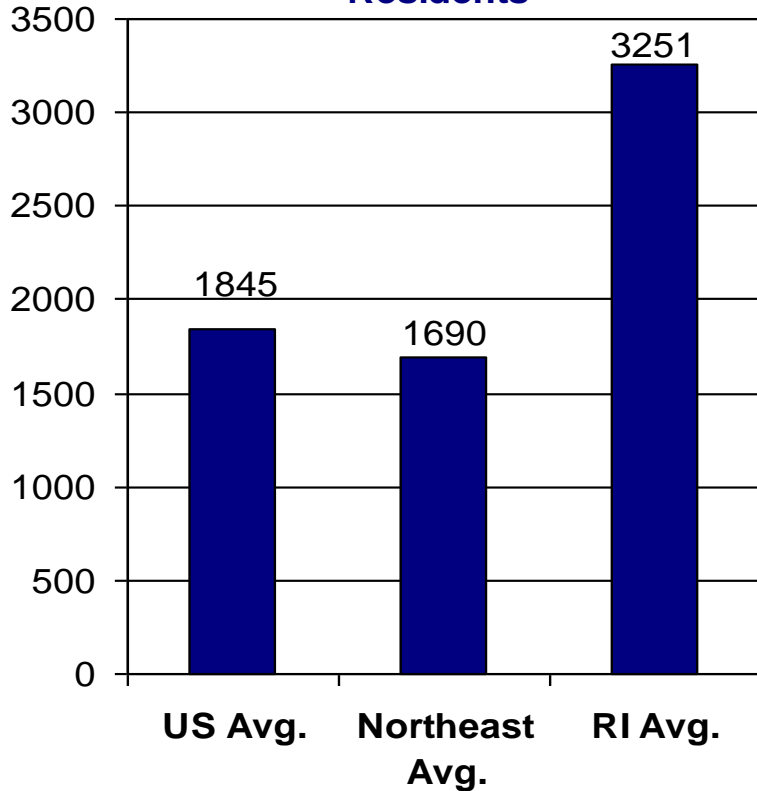
- currently incarcerated (2228)
- being supervised by another State (1086)
- residing in another State (1948)
- have been deported (444)
- 538 out of state offenders being supervised in RI
- paroled to immigration or other jurisdiction (84)
- another 177 offenders for whom a residential location was unable to be determined.
- 301 with other addresses (ACI, No Permanent Address, etc.) - 0 offenders under 18 years under active supervision





How does the RI Probation Population compare?

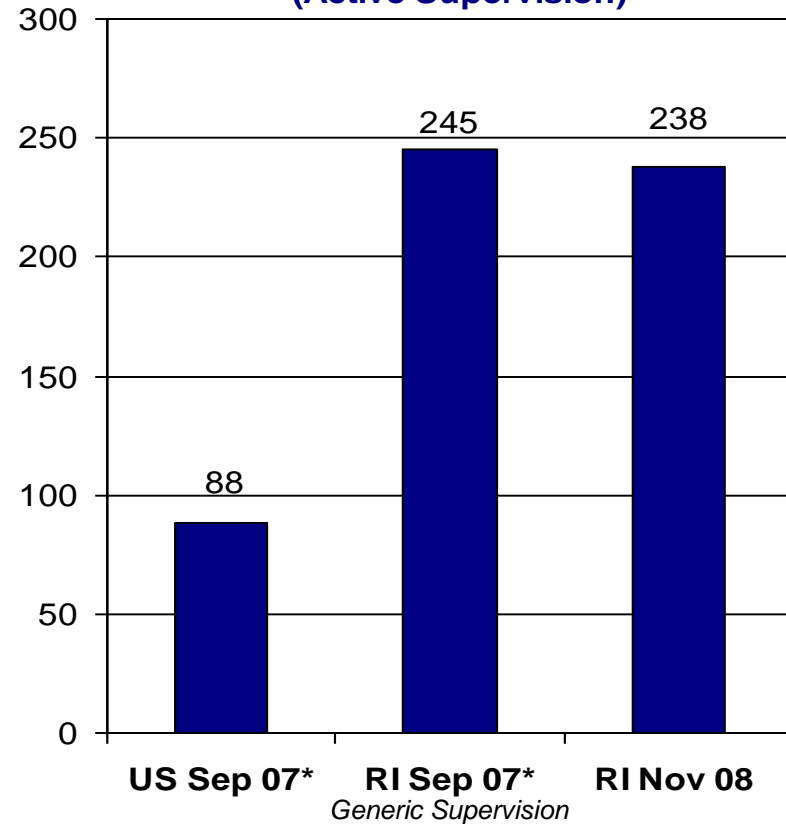
Probationers per 100,000 Adult Residents



RI ranks 4th in the nation and 2nd in the Northeast in the number of probationers per 100,000 adult residents. Massachusetts ranks 1st in the Northeast with 3620 probationers per 100,000 adult residents.

Data provided by Bureau of Justice Statistics Bulletin: "Probation and Parole in the United States, 2008"

Average Probation Caseload Size (Active Supervision)



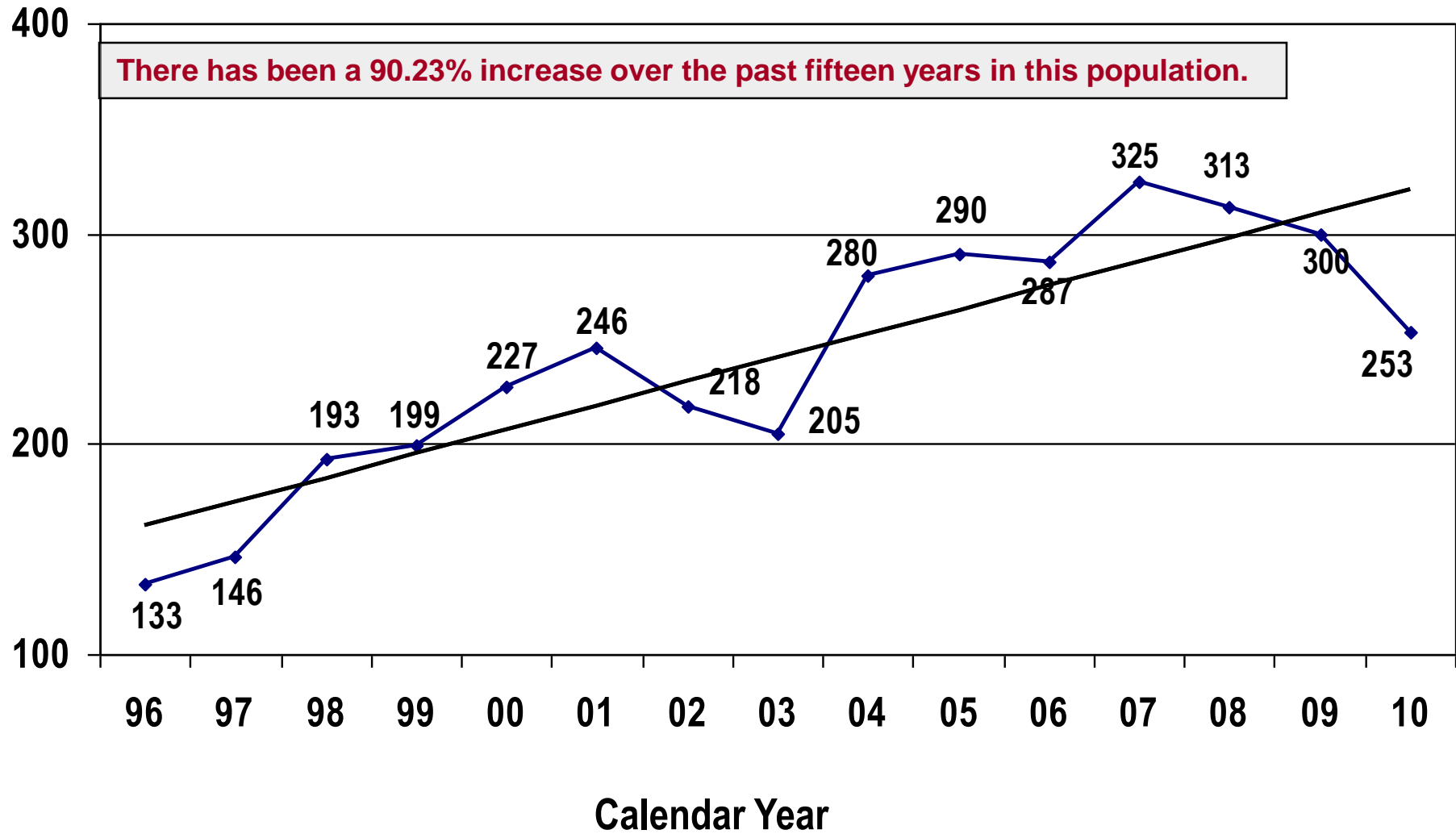
In 2007 (most recent year for which there is national data available), the RI average was almost three times the national average.

** Data provided by the American Correctional Association Directory, 2008 (calendar year 2007 data), based on 13 of 50 jurisdictions reporting.*





Average Total Community Confinement Population CY96 to CY11





RI Inmates Serving Life or Life without Parole

On December 31, 2009 there were 162 Rhode Island inmates serving a Life Sentence (17 were serving out-of-state).

On December 31, 2009 there were 40 Rhode Island inmates serving a sentence of Life without Parole (5 were serving out-of state).

Since 1990, there have been 5 inmates who died while serving a Life sentence and 2 who died while serving Life without Parole.

