


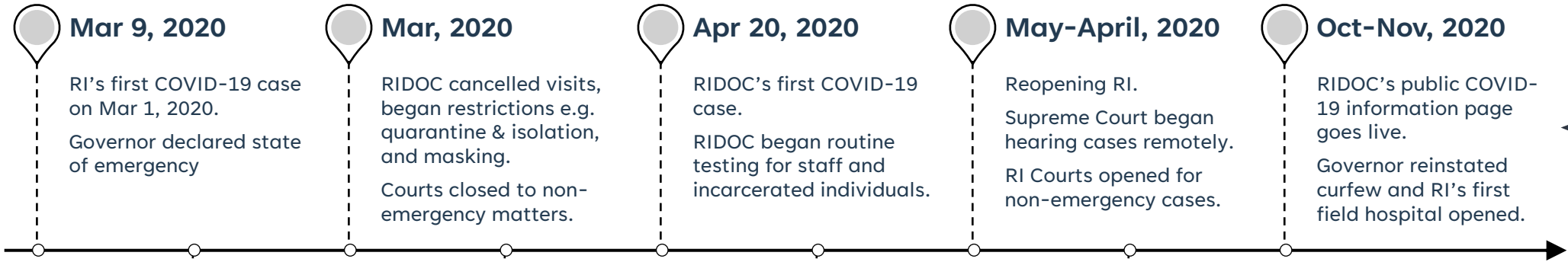


Rhode Island Department of Corrections

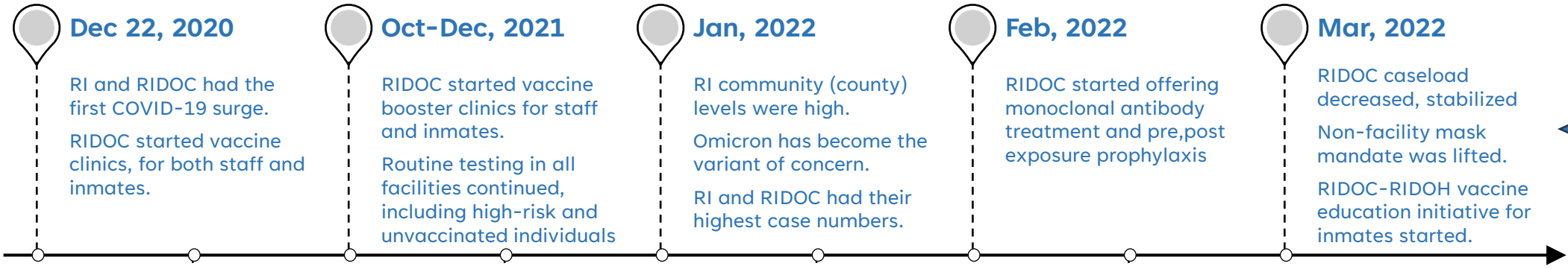
COVID-19 pandemic data (3/1/2020-5/11/2023)



By Healthcare Services and Planning & Research Unit
Rehabilitative Services, RIDOC



2020
 Pandemic
 Year1



2021-2
 Pandemic
 Year2,3

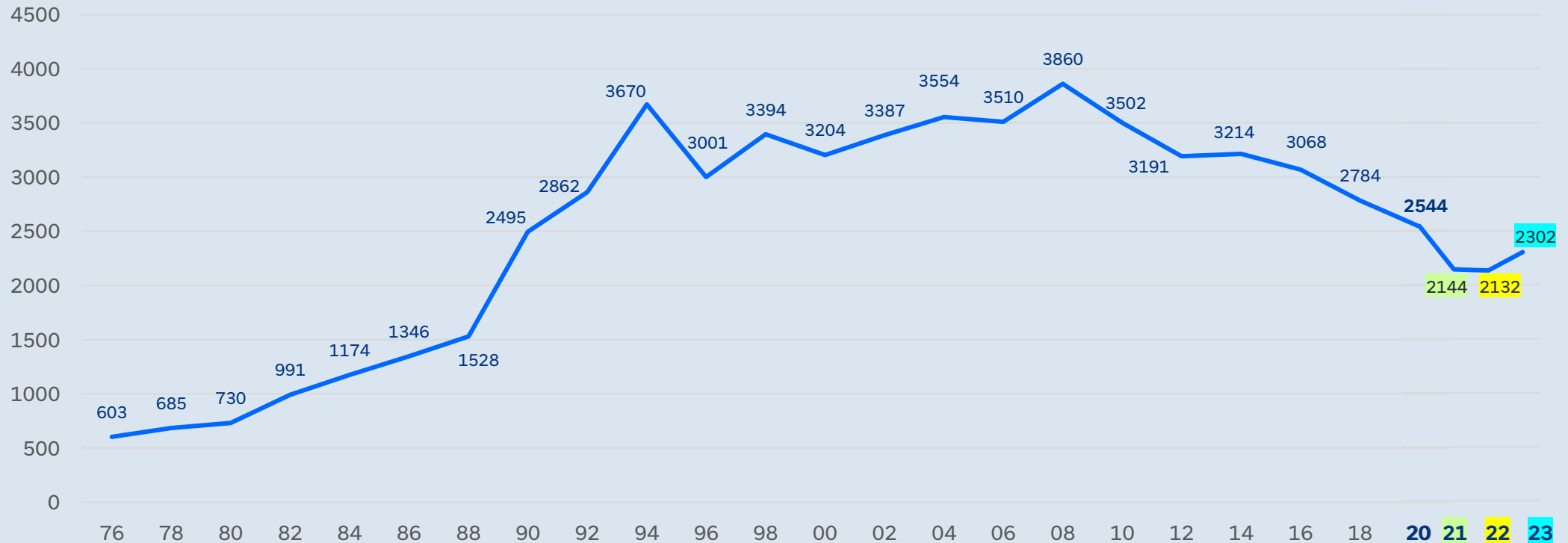


Public Health
 Emergency ends
 on May 11, 2023

Average yearly populations *by fiscal year

The below graph depicts the average yearly population for every other fiscal year from 1976-2020, and yearly from 2020-2023.

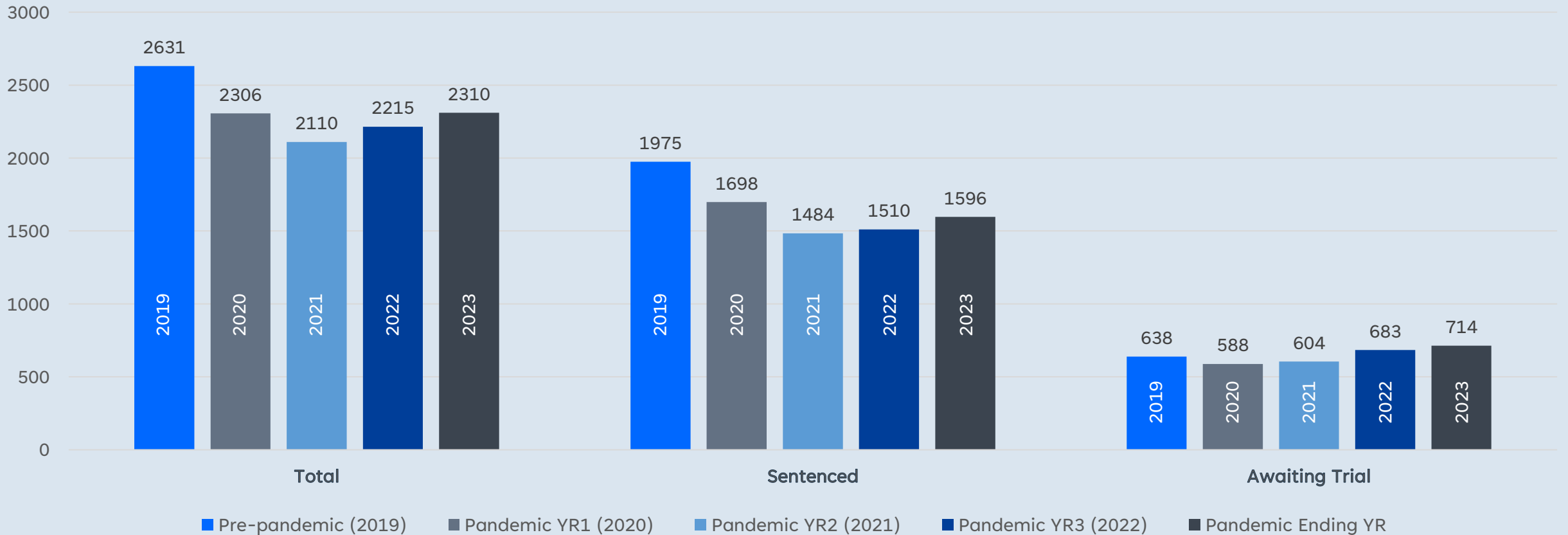
- The pandemic started in the second half of FY2020 and ended almost at the end of FY2023.
- FY2023 average is during July 1, 2022 – May 11, 2023.
- The average yearly population for FY2022 is the lowest it has been since 1988.



Population Data *by calendar year

A comparison of RIDOC average population before the pandemic (Jan-Dec2019) and during the pandemic (Jan2020-May2023).

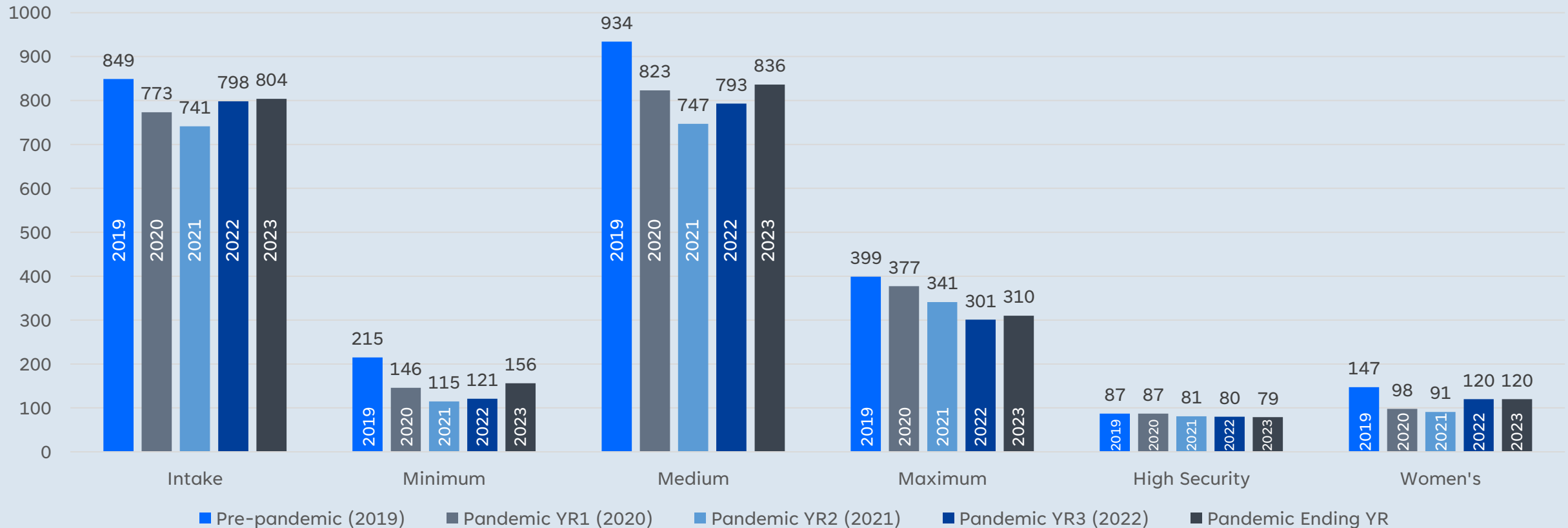
- Total population includes sentenced, awaiting trial, civil purge, immigration, US hold and other hold individuals.
- Average Total population dropped during the Pandemic YR1 and YR2; 12.4% and 19.8% respectively, compared to pre-pandemic
- Average Sentenced population dropped during the Pandemic YR1 and YR2; 14% and 24.9% respectively, compared to pre-pandemic.
- Average Awaiting trial population dropped more during the Pandemic YR1 than YR2; 7.8% and 5.3% respectively, compared to pre-pandemic.



Population Data *by calendar year

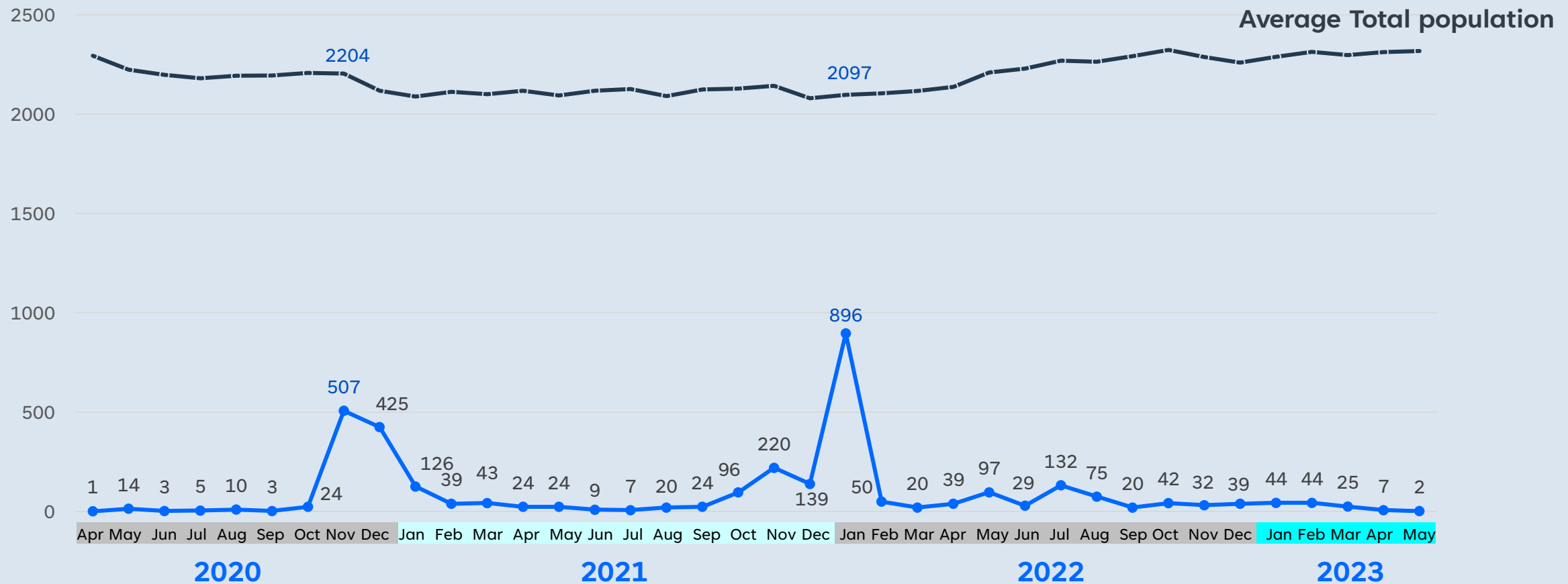
A comparison of each facility's average population before the pandemic (Jan-Dec2019) and during the pandemic (Jan2020-May2023).

- The average population dropped during the first and second pandemic years.
- In most facilities, the average population started to increase in the third pandemic year.
- None has yet reached the average population levels prior to pandemic.



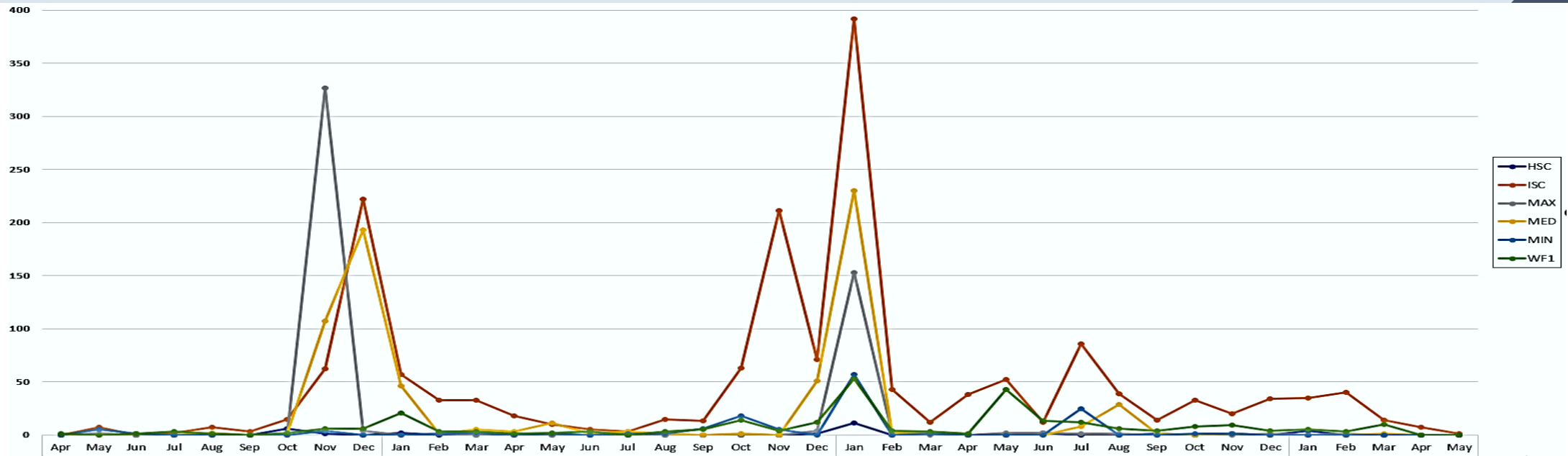
RIDOC COVID-19 cases, total

- RIDOC's first peak of COVID-19 cases was in November 2020, with 507 cases (23% of total population).
- RIDOC's second peak, and the highest, was in January 2022, with 896 cases (42.7% of total population).
- RIDOC's average case rate throughout the Pandemic is 4.0% of total population; the highest was 42.7% and the lowest was <0.1%.



As of May 11, 2023

RIDOC COVID-19 cases, by facility

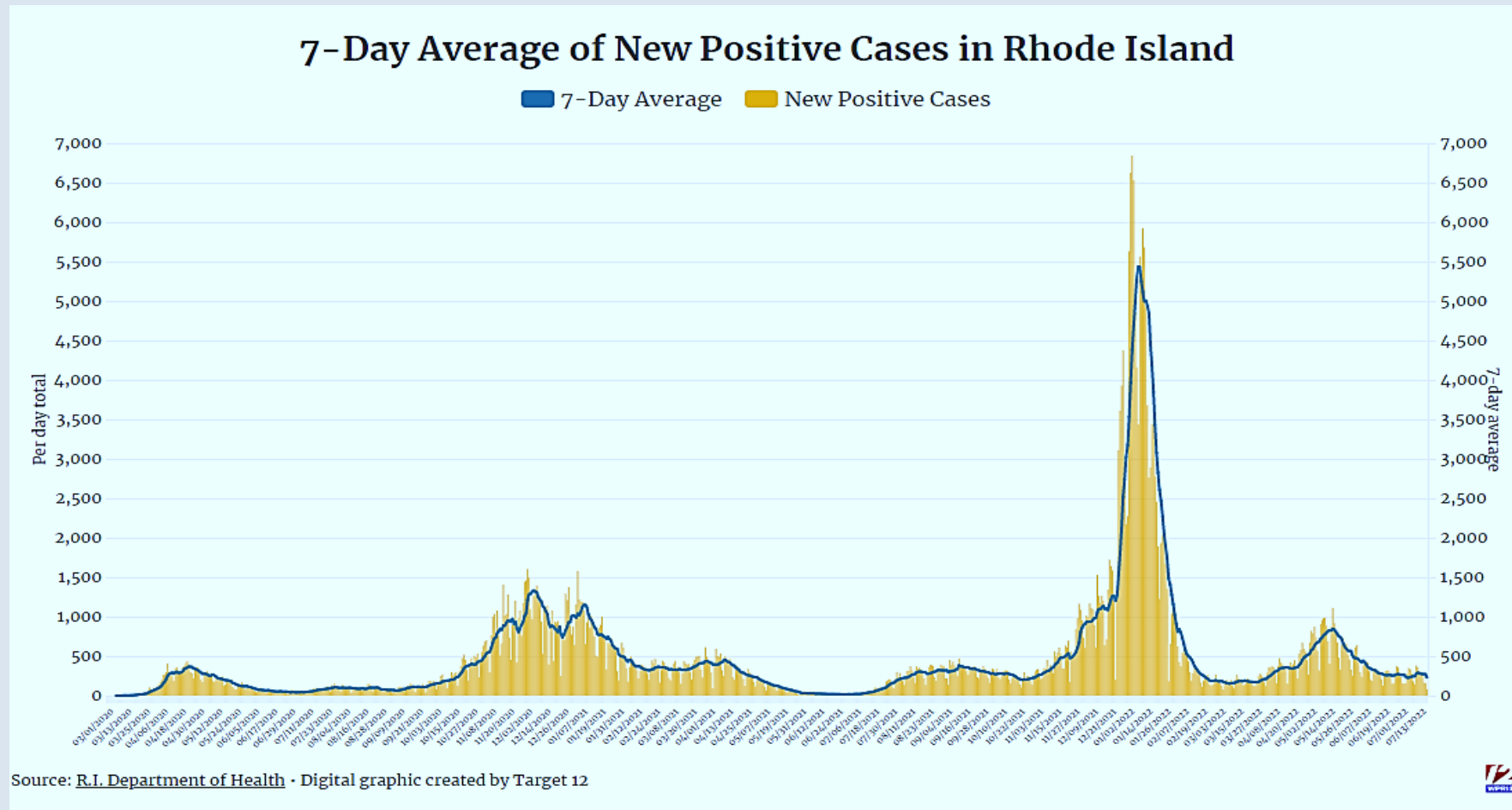


	2020									2021									2022									2023					Deaths	TOTAL							
	Apr	May	Jun	Jul	Aug	Sep	Oct	Nov	Dec	Jan	Feb	Mar	Apr	May	Jun	Jul	Aug	Sep	Oct	Nov	Dec	Jan	Feb	Mar	Apr	May	Jun	Jul	Aug	Sep	Oct	Nov			Dec	Jan	Feb	Mar	Apr	May	
Intake	0	7	0	2	7	3	15	62	222	57	33	33	18	10	5	3	15	13	63	211	71	392	43	12	38	52	12	86	39	14	33	20	34	35	40	14	7	2	0	1723	
Minimum	0	5	1	0	0	0	0	4	0	0	1	2	0	1	0	1	6	18	5	0	57	0	1	0	0	0	0	25	0	0	1	1	0	0	0	0	0	0	0	130	
Medium	0	0	1	0	2	0	1	107	193	46	1	5	3	11	1	3	1	0	1	0	51	230	2	2	0	0	8	29	1	0	1	0	0	0	0	1	0	0	1	701	
Maximum	0	1	0	0	0	0	0	327	4	0	1	0	2	0	0	0	0	0	0	0	4	153	1	0	0	2	2	1	1	0	0	0	1	0	1	0	0	0	0	1	501
High Sec.	0	1	0	0	0	0	6	1	0	2	0	0	0	0	0	0	0	0	0	0	1	11	0	2	0	0	2	0	0	1	0	1	0	4	0	0	0	0	0	0	32
Women's	1	0	1	3	1	0	2	6	6	21	3	3	1	2	3	0	3	5	14	4	12	53	4	3	1	43	13	12	6	4	8	9	4	5	3	10	0	0	0	269	
TOTAL	1	14	3	5	10	3	24	507	425	126	39	43	24	24	9	7	20	24	96	220	139	896	50	20	39	97	29	132	75	20	42	32	39	44	44	25	7	2	2	3356	

State of Rhode Island COVID-19 cases

Below graphic depicts RI's COVID-19 cases between Mar2020-July2022.

- RI's first peak of COVID-19 cases was Nov2020-Jan2021. The highest number of cases was 1,604, on 12/3/2020.
- RI's highest peak of COVID-19 cases was Dec2022-Jan2023. The highest number of cases was 6,840 on 1/5/2022.



RIDOC COVID-19 vaccination

The below graphic depicts vaccine status of incarcerated individuals at RIDOC, as of May 11, 2023.

Intake and Women’s have low vaccination rates for numerous reasons; these facilities are transient in nature due to housing those on awaiting trial status, who may stay for very short period and are not able to be vaccinated before they are released. Challenges in verification of past vaccination for new commits upon arrival also contributes to underrepresented numbers.

- RIDOC’s vaccination clinics began in December 2020. RIDOC continues to offer vaccine education and vaccine to all individuals.
- RIDOC incarcerated population are 59% Fully Vaccinated and 29% Bivalent Vaccinated.
- RIDOH reported that Rhode Island residents are 88% Fully Vaccinated and 25.7% Bivalent Vaccinated.¹

	Population	Number of *Fully Vaccinated individuals	% Fully Vaccinated	Number of **Bivalent Vaccinated individuals	% Bivalent Vaccinated
Intake	809	324	40%	117	14%
Minimum	176	101	58%	40	23%
Medium	822	591	72%	333	41%
Maximum	316	234	74%	131	41%
High Sec.	79	62	79%	32	41%
Women’s	121	60	50%	16	13%
Total	2323	1372	59%	669	29%

* Fully vaccinated means having completed the COVID-19 primary vaccination (also called the ‘original’ vaccination by CDC)

** Bivalent vaccinated means having received one COVID-19 bivalent vaccine (also called the ‘updated’ vaccine by CDC)

¹ RIDOH COVID-19 Response Data; available at <https://ri-department-of-health-covid-19-data-rihealth.hub.arcgis.com> (accessed on 5/11/2023)

