

Rhode Island Department of Corrections

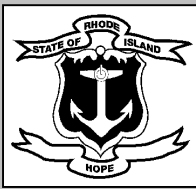
Calendar Year Population Update

December 31, 2012

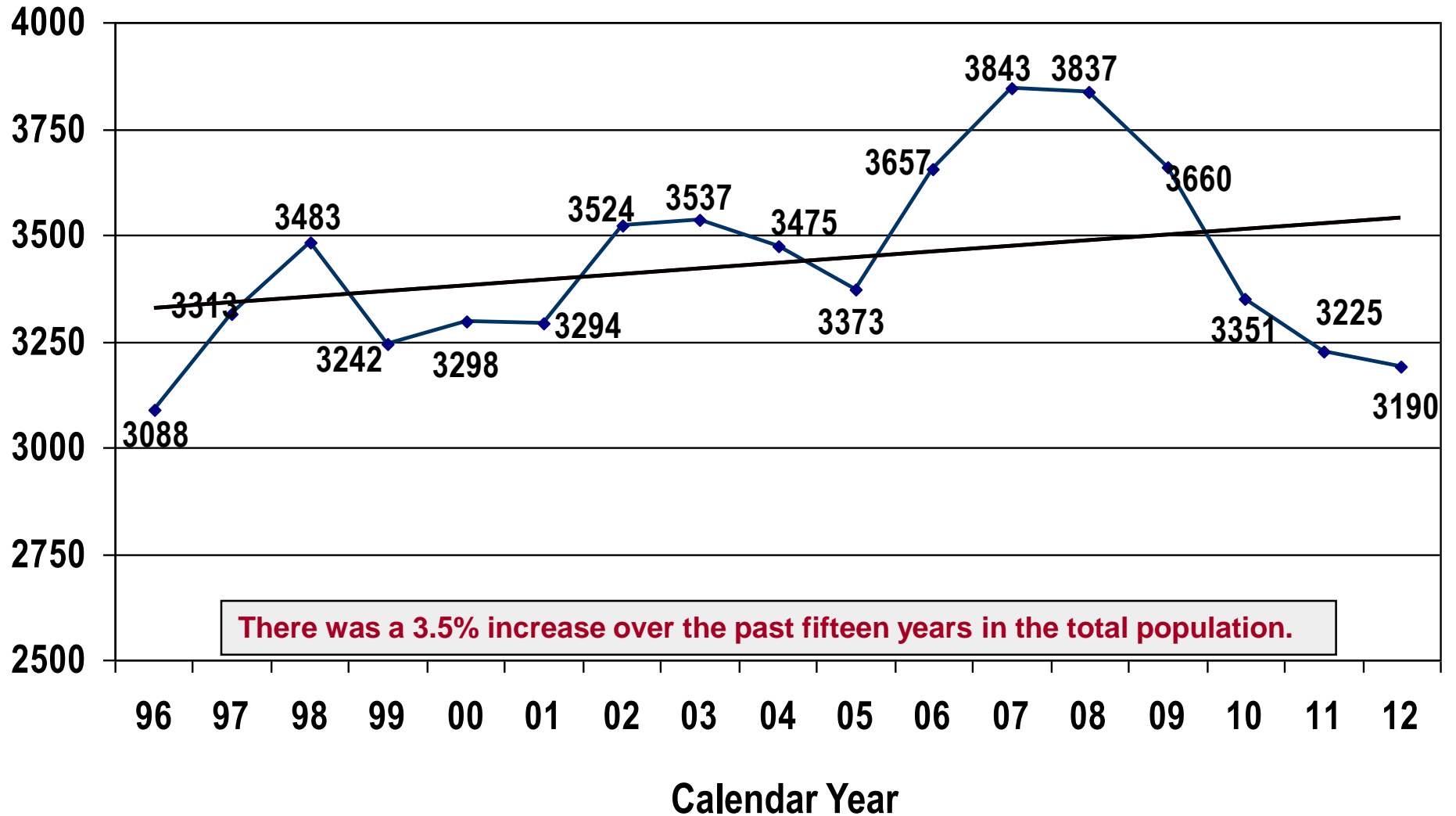
Director Ashbel T. Wall II

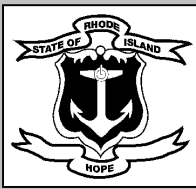


Rhode Island Department of
Corrections

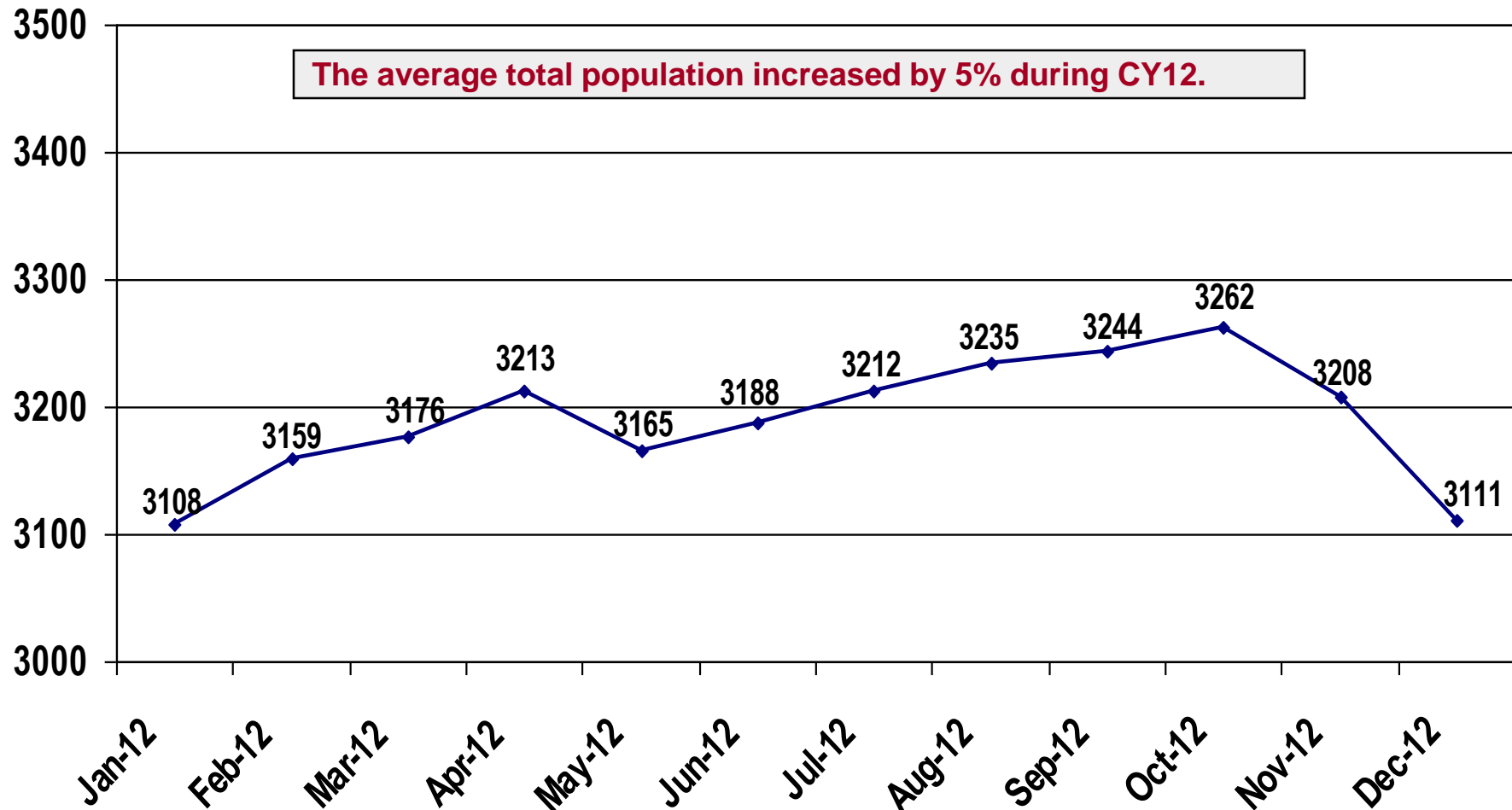


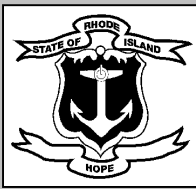
Average Total Population CY 1996 to CY 2012





Average Total Population by Month Calendar Year 2012

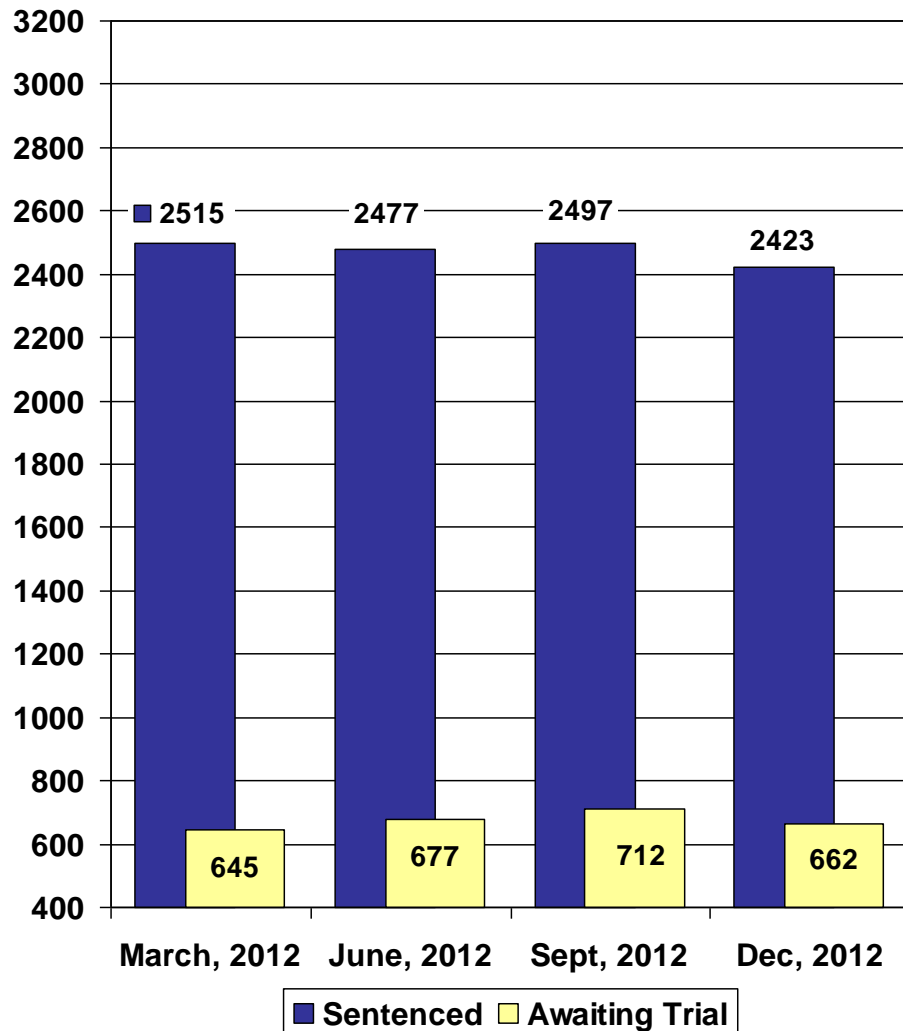




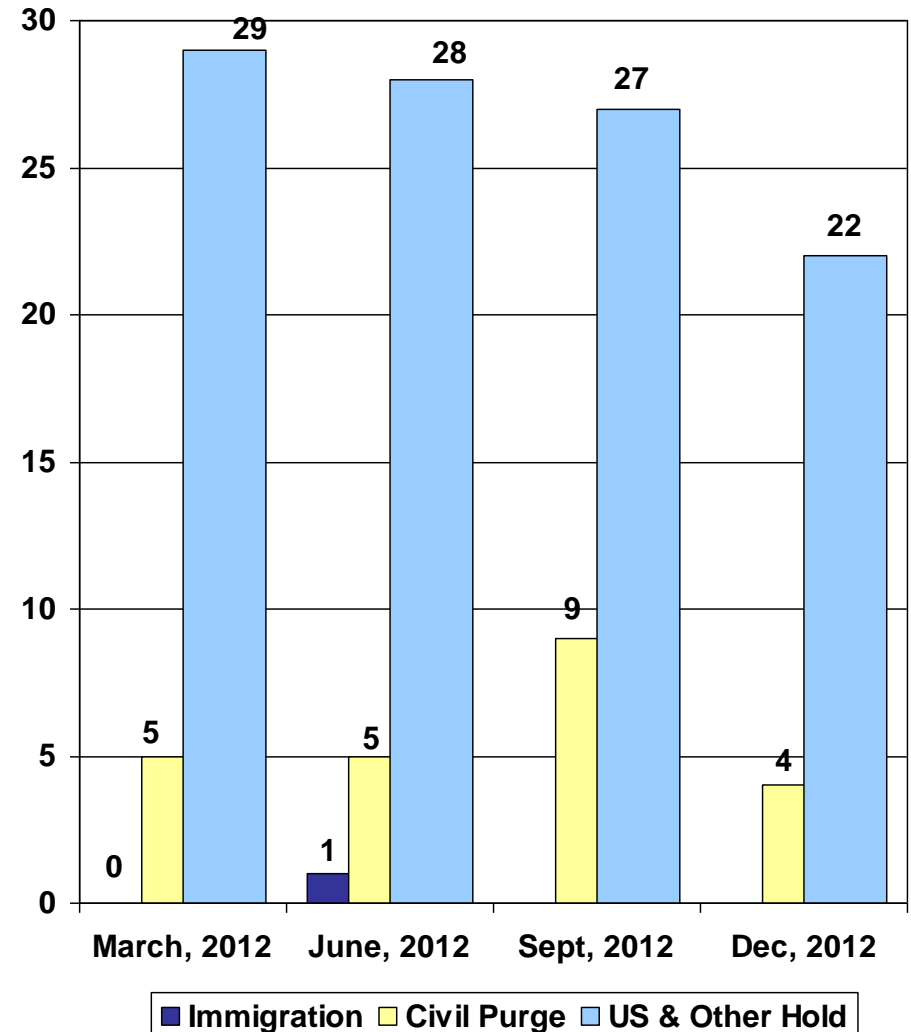
Population Trends During CY 2012

Sentenced & Awaiting Trial, Civil Purge & Detainees

Sentenced & Awaiting Trial



Civil Purge & Detainees

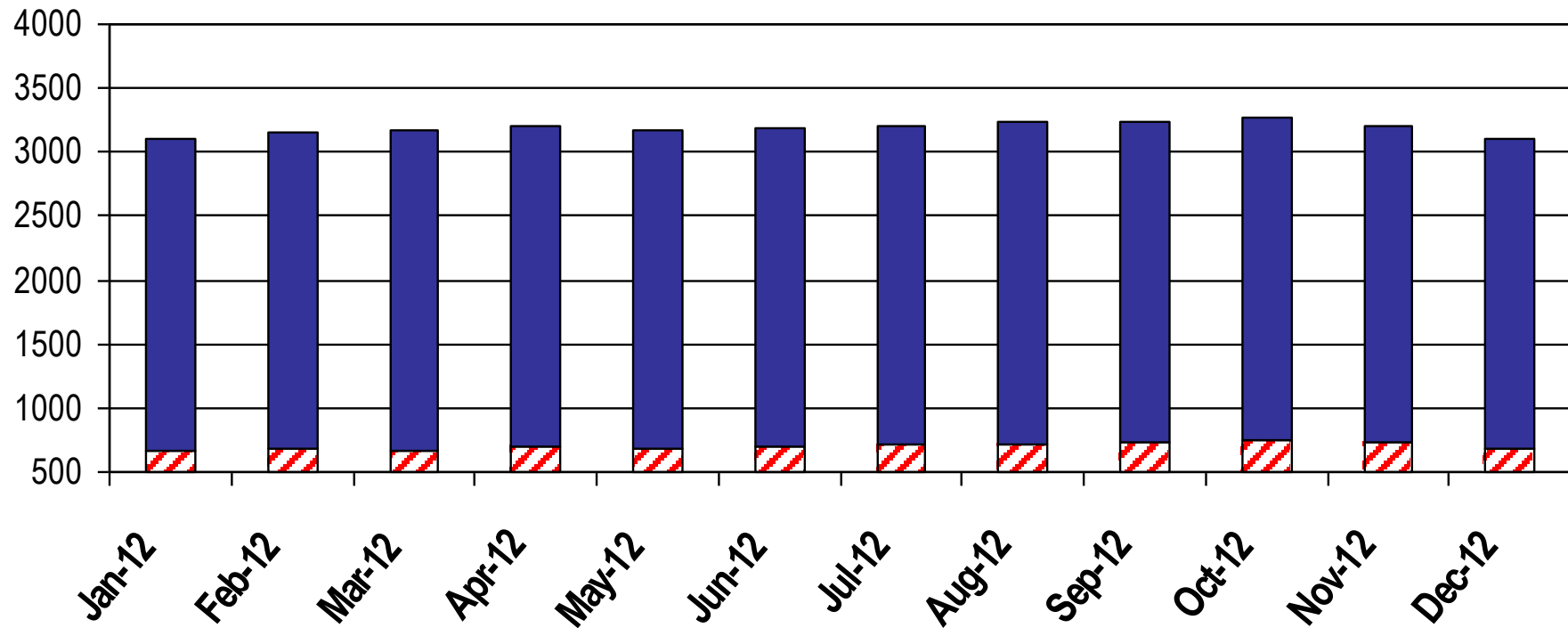




Average Monthly Population CY 2012 by Status – Pretrial or Sentenced

The RI Sentenced population decreased by 0.7% during CY12.

The RI Pretrial population increased by 3.2% during CY12.

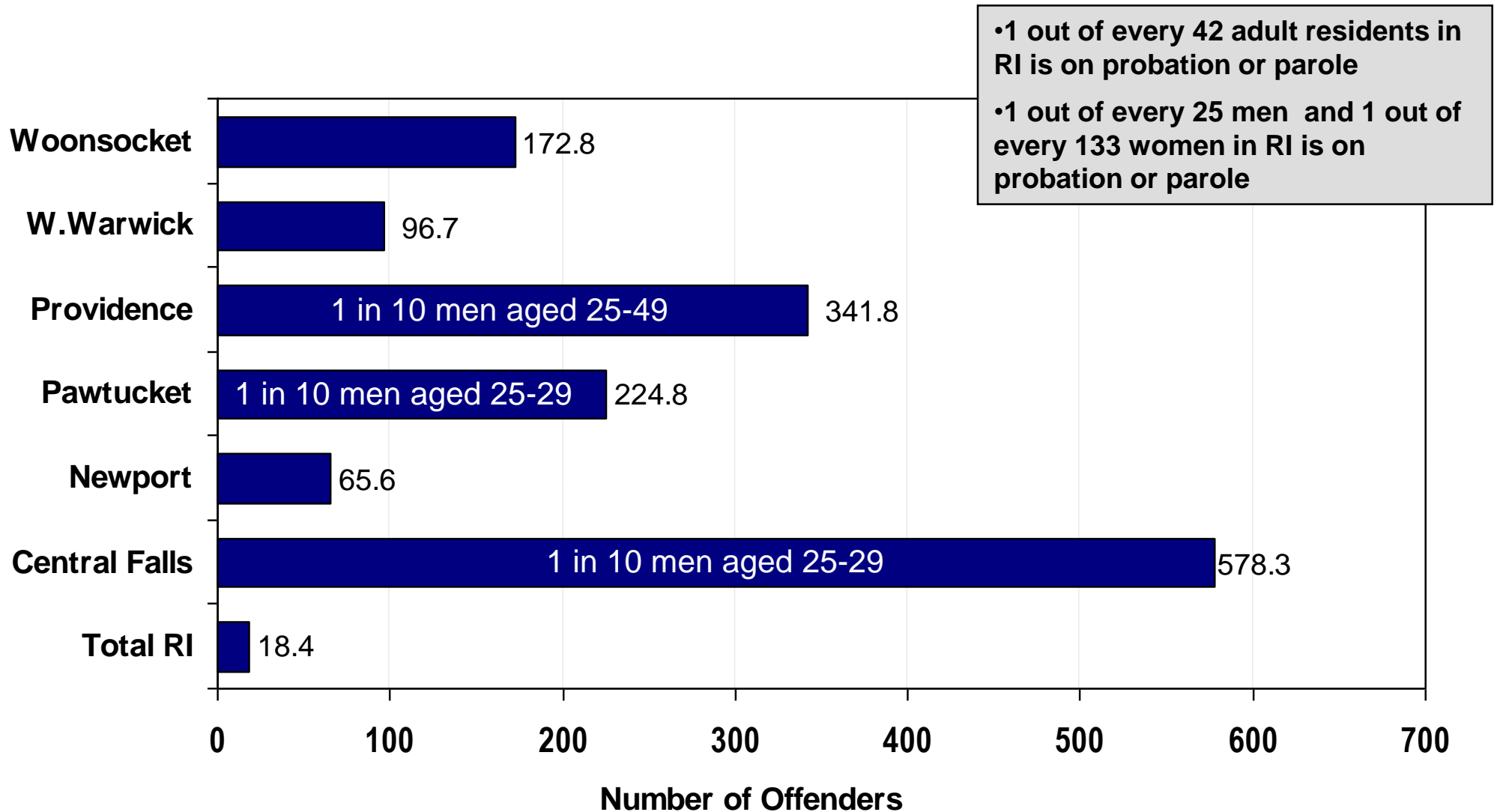


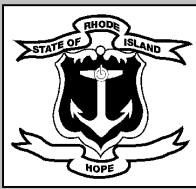
	12-Jan	12-Feb	12-Mar	12-Apr	12-May	12-Jun	12-Jul	12-Aug	12-Sep	12-Oct	12-Nov	12-Dec
■ Sentenced	2445	2472	2502	2511	2484	2482	2495	2514	2506	2513	2473	2427
▨ Pretrial	663	687	674	700	681	706	717	721	739	749	735	684





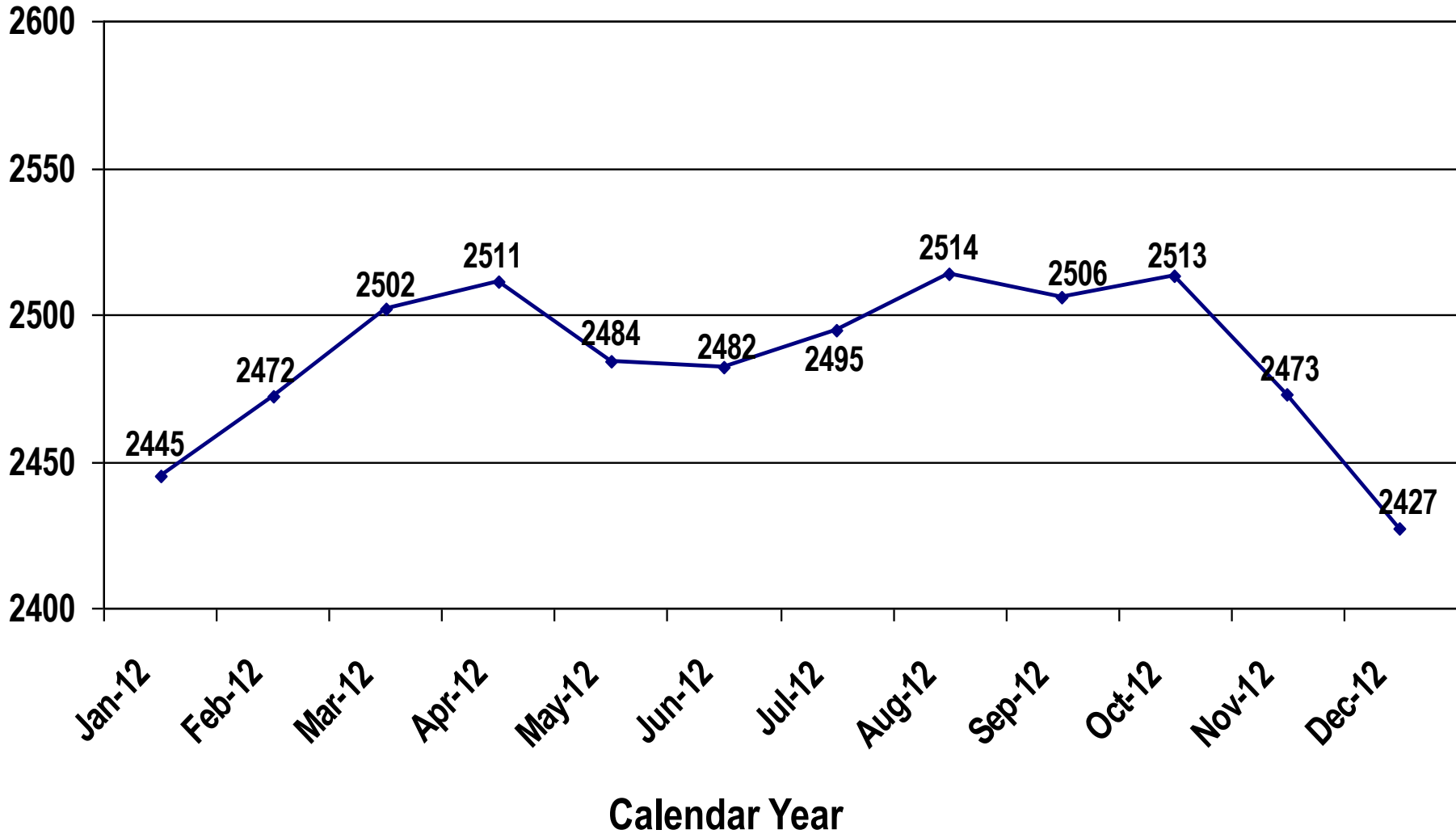
Number of Offenders on Community Supervision per Square Mile as of December 31, 2012 update





Average Monthly Sentenced Population Calendar Year 2012

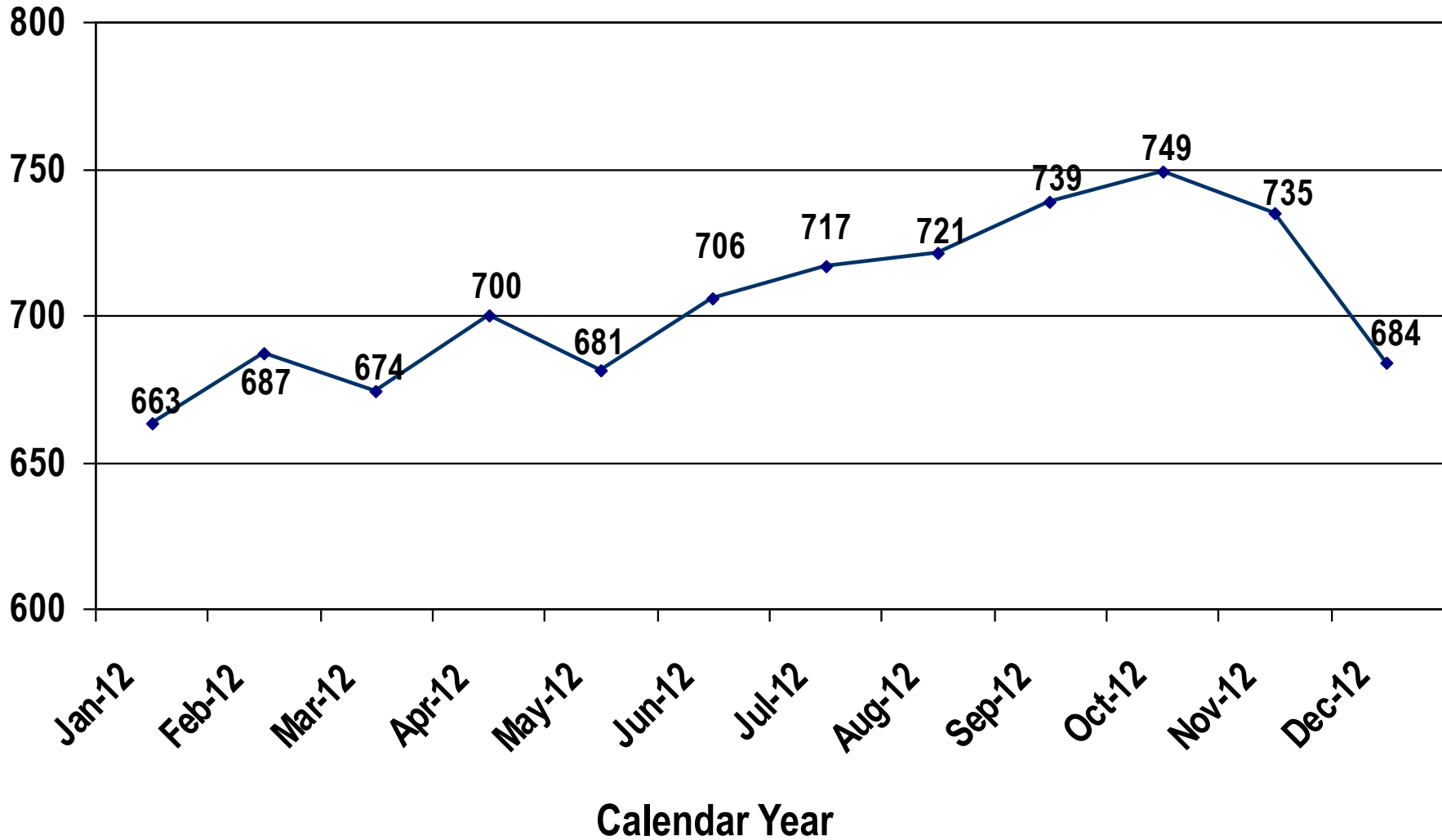
The Sentenced population decreased by 0.7% during CY12.





Average Monthly Awaiting Trial Population Calendar Year 2012

The Pretrial population increased by 3.2% during CY12.

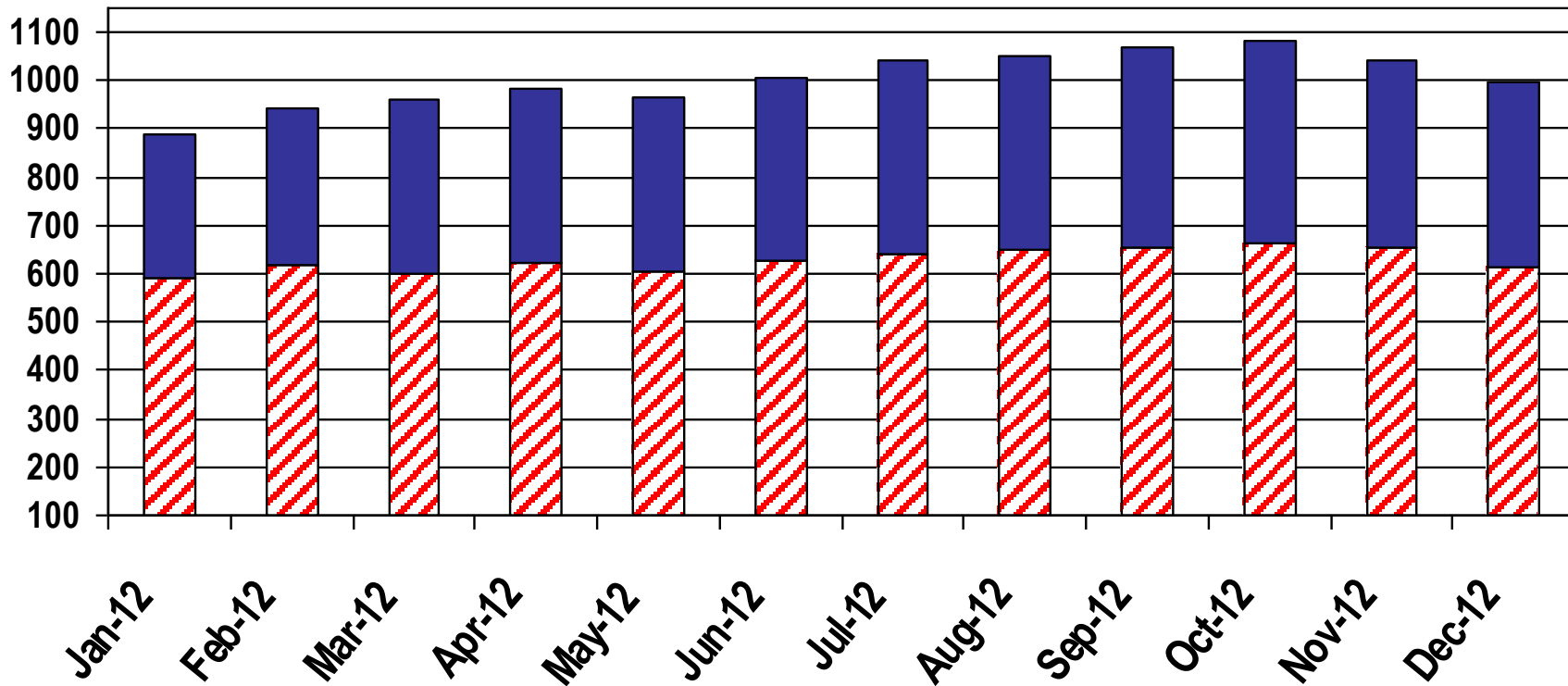




Intake Service Center (ISC) Average Monthly Population CY 2012 by Status – Pretrial or Sentenced

The RI Sentenced population at the ISC increased by XX% during CY12.

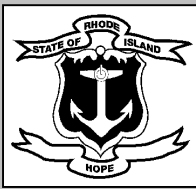
The RI Pretrial population at the ISC increased by 4% during CY12.



	12-Jan	12-Feb	12-Mar	12-Apr	12-May	12-Jun	12-Jul	12-Aug	12-Sep	12-Oct	12-Nov	12-Dec
■ Sentenced	301	325	357	359	358	379	400	405	411	420	390	385
▨ Pretrial	589	616	602	623	606	628	643	648	656	664	653	612

*Please note September is an average of 9/1-9/23 and not an average of the entire month

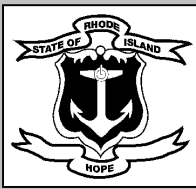




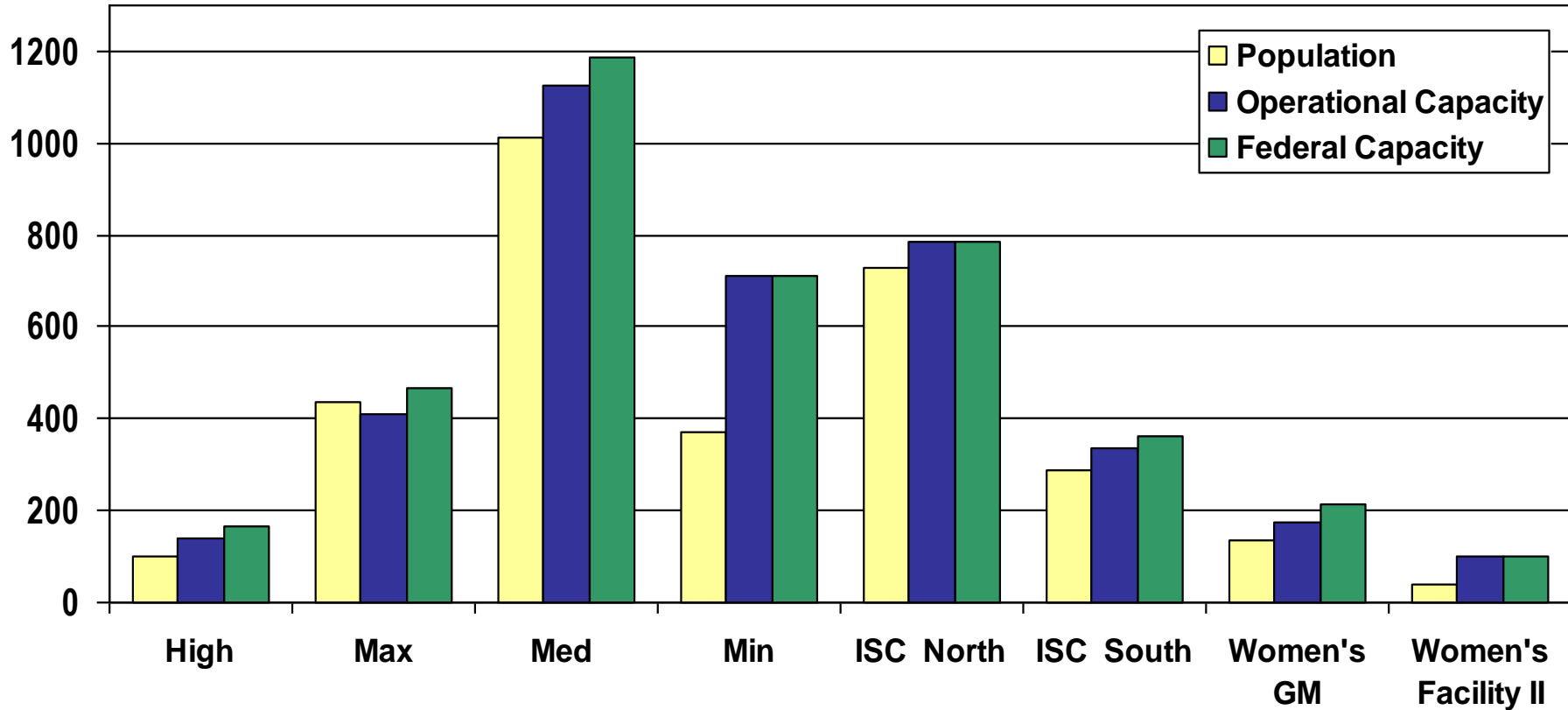
RIDOC Total Commitments CY 1995 – 2012

Calendar Year	# Commitments	+/- Change
1995	14,417	
1996	14,820	2.8%
1997	15,672	5.7%
1998	16,526	5.4%
1999	15,828	-4.2%
2000	16,389	3.5%
2001	16,892	3.1%
2002	17,487	3.5%
2003	18,026	3.1%
2004	17,497	-2.9%
2005	17,682	1.1%
2006	19,287	9.1%
2007	17,764	-7.9%
2008	16,865	-5.1%
2009	15,306	-9.2%
2010	15,173	-0.87%
2011	15,084	-0.6%
2012	15,318	1.6%





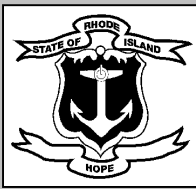
Population vs. Operational & Federal Capacity December 2012



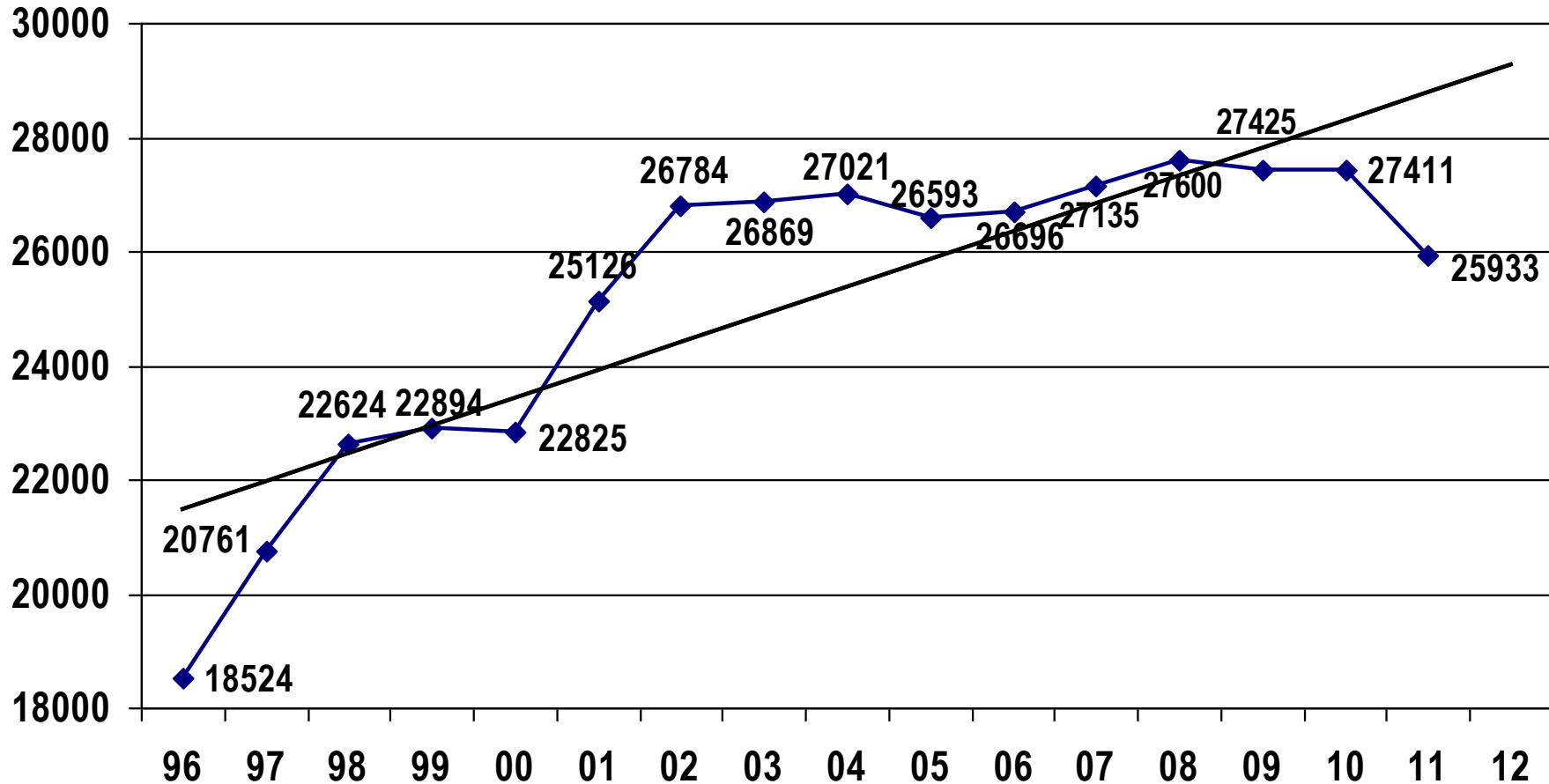
Pop. % of Op Cap	60.8%	106.8%	100.3%	93.5%	67.7%	98.1%	55.7%	79.3%	45.6%
Pop. % of Fed Cap	50.7%	93.8%	94.7%	84.1%	67.7%	98.1%	51.2%	77.5%	35.1%

Total Average Population for December 2012 = 3088
82% of Operational Capacity (3774) and 77.4% of Federal Capacity (3989)





Average Total Probation & Parole Population CY 1996 to CY 2012



Over the past 15 years the population has increased XX.X%

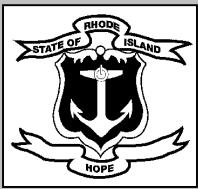
*Total population includes active, low and banked supervision cases.

As of December 31, 2009, there were 20,443 RI offenders under the supervision of Adult Probation & Parole living on the streets of RI.

The remaining 6,806 offenders are:

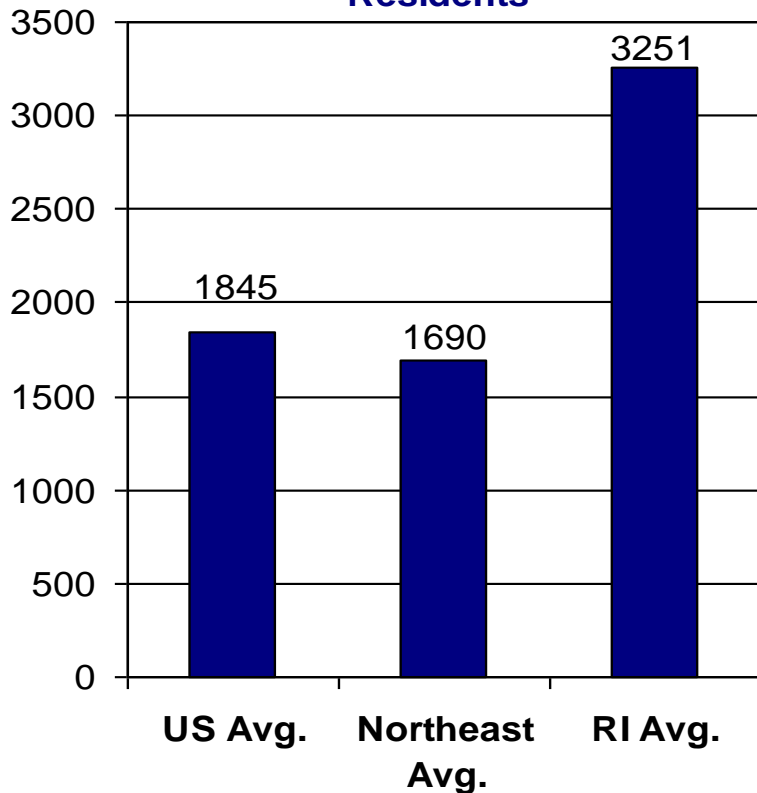
- currently incarcerated (2228)
- residing in another State (1948)
- 538 out of state offenders being supervised in RI
- another 177 offenders for whom a residential location was unable to be determined.
- 301 with other addresses (ACI, No Permanent Address, etc.)
- being supervised by another State (1086)
- have been deported (444)
- paroled to immigration or other jurisdiction (84)
- 0 offenders under 18 years under active supervision





How does the RI Probation Population compare?

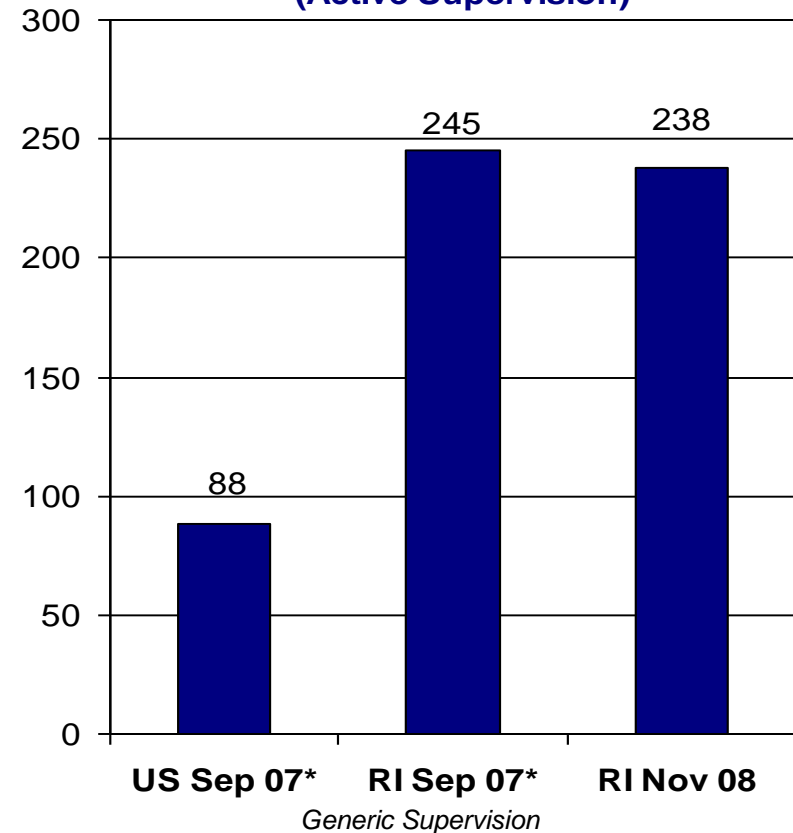
Probationers per 100,000 Adult Residents



RI ranks 4th in the nation and 2nd in the Northeast in the number of probationers per 100,000 adult residents. Massachusetts ranks 1st in the Northeast with 3620 probationers per 100,000 adult residents.

Data provided by Bureau of Justice Statistics Bulletin: "Probation and Parole in the United States, 2008"

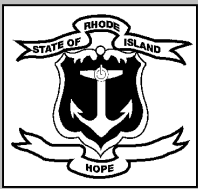
Average Probation Caseload Size (Active Supervision)



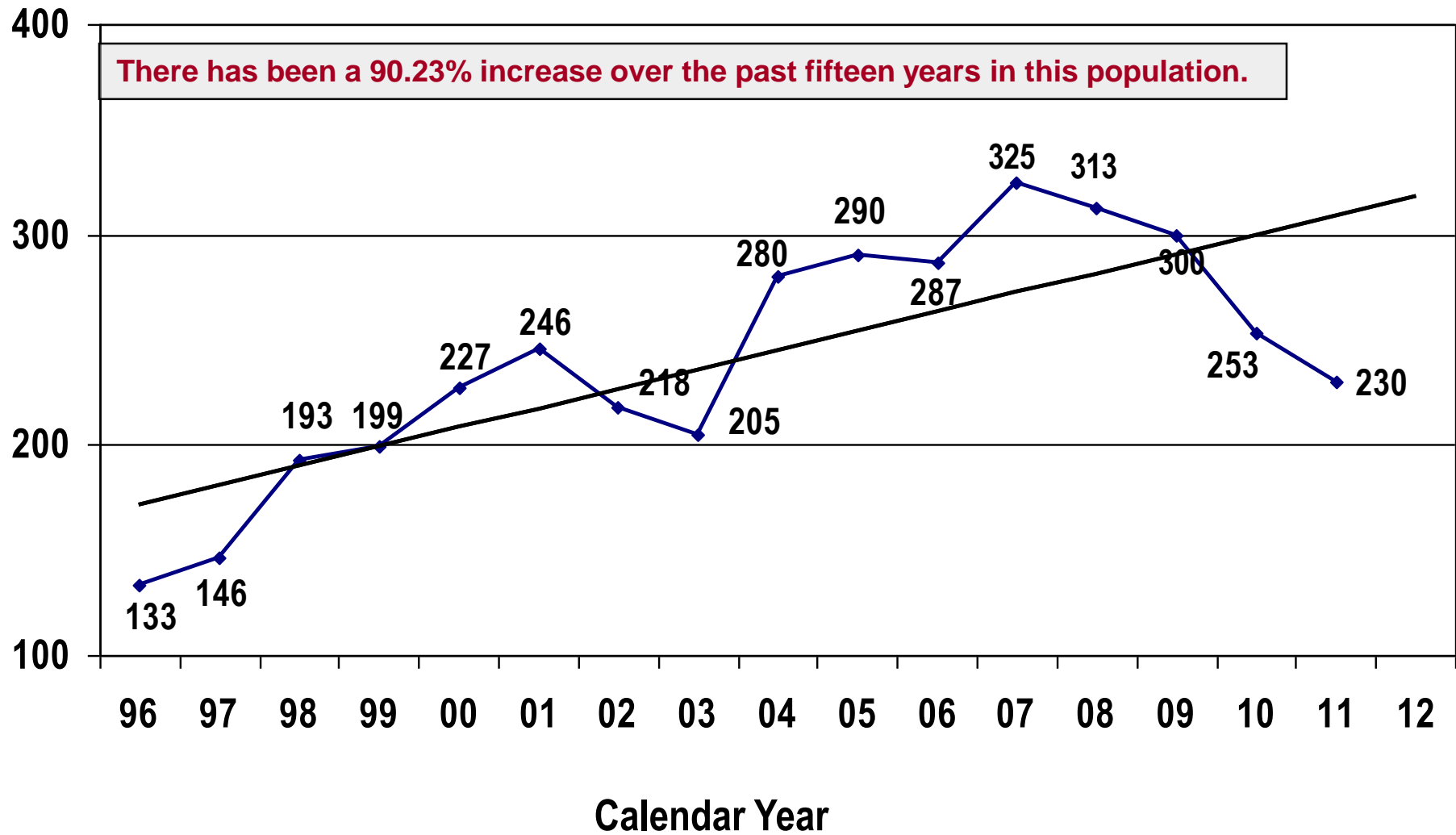
In 2007 (most recent year for which there is national data available), the RI average was almost three times the national average.

** Data provided by the American Correctional Association Directory, 2008 (calendar year 2007 data), based on 13 of 50 jurisdictions reporting.*





Average Total Community Confinement Population CY96 to CY12





RI Inmates Serving Life or Life without Parole

On December 31, 2012 there were **162** Rhode Island inmates serving a Life Sentence (**17** were serving out-of-state).

On December 31, 2012 there were **40** Rhode Island inmates serving a sentence of Life without Parole (**5** were serving out-of state).

Since 1990, there have been 5 inmates who died while serving a Life sentence and 2 who died while serving Life without Parole.

